

Process Gauges

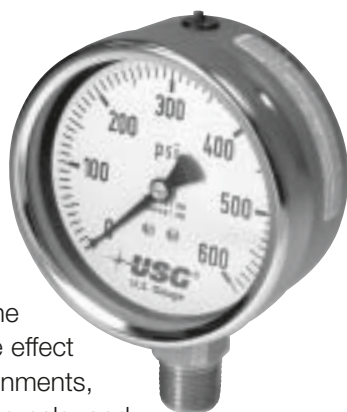
New!

Model 656 Open Front Stainless Steel Pressure Gauges

DESCRIPTION

The 656 Series are suitable for corrosive environments in chemical, petrochemical, refining, power, marine, and food and pharmaceutical processing applications. Liquid filled pressure gauges provide users with a number of advantages in certain measurement applications. They are ideally suited for uses on equipment where excessive vibration and pulsation are encountered, such as pumps, compressors, machine tools, etc. The liquid fill minimizes the effect of these severe environments, protects the gauge internals, and provides continuous lubrication on the mechanism, all adding up to extended service life. Liquid filling also provides greater protection of the gauge internals from corrosive atmospheres.

AMETEK liquid filled gauges can be used with a variety of fill fluids including glycerin, mineral oil, and silicone oil. These gauges are available in 63 and 100 mm sizes. Consult your local distributor or U.S. Gauge for availability.



SPECIFICATIONS

ACCURACY

Model 6562 (63 mm): +1.6% of full scale (Grade B)
 Model 6566 (100 mm): +1.0% of full scale (Grade 1A)

PRESSURE RANGE

63 mm: 30 inch Hg to 0 psi through 0 to 10,000 psi (0 to 6000 psi on the LBM model)
 100 mm: 30 inch Hg to 0 psi through 0 to 23,000 psi

Please refer to Pressure Range Table on page A24 for specific information

WORKING PRESSURE

Steady: 50% of full scale
 Over Range Protection: 125% of full scale

WORKING TEMPERATURE

Ambient: -40°F to 140°F (-40°C to 60°C)
 Fluid: -4°F to 176°F (-20°C to 80°C)

FILLING LIQUID: Glycerin, silicone, mineral oil

PRESSURE CONNECTION: 316L stainless steel

BOURDON TUBE: 316L stainless steel

Model 6562 (63 mm):
 Less than or equal to 800 psi: C type Bourdon tube
 Greater than or equal to 1000 psi: Helical type Bourdon tube
 Model 6566 (100 mm):
 Less than or equal to 1000 psi: C type Bourdon tube
 Greater than or equal to 1500 psi: Helical type Bourdon tube

CASE PRESSURE RELIEF

Top: Rubber disc for 63 mm
 Back: Rubber disc for 100 mm

CASE AND BEZEL RING: 304 stainless steel; bayonet type

MOVEMENT: 304 stainless steel

WINDOW

63 mm: Polycarbonate (laminated shatter-resistant glass window optional)

100 mm: Laminated shatter-resistant glass window

DIAL: White aluminum with black lettering

POINTER: Aluminum alloy, black painted; contact U.S. Gauge for adjustable pointer on 100 mm

PROCESS CONNECTION: See ordering information page A26

SOLFRUNT 656 Series Liquid Fillable Pressure Gauges

WARNING:

Fill fluids can combine with strong oxidizing agents, including (but not limited to) chlorine, nitric acid, and hydrogen peroxide and result in an explosion which can cause property damage and personal injury. If gauges are to be used in such service, consult factory for other alternatives.

In order to correctly use these gauges, it is recommended that users of pressure gauges become familiar with American National Standard ASME B40.100-1998 entitled "Pressure Gauges and Gauge Attachments." This specification is available from the American Society of Mechanical Engineers, United Engineering Center, 345 East 47th Street, New York, NY 10017

© 2002, by AMETEK, Inc. All rights reserved. 15M1102A (160126) Specifications are subject to change without notice. Visit our Web sites for the most up-to-date information.



For Gauges/Thermometers:

U.S. GAUGE
 820 Pennsylvania Blvd.
 Feasterville, PA 19053 U.S.A.
 Tel: (215) 355-6900
 Fax: (215) 354-1802
 www.ametekusg.com

Customer Service Tel: (863) 534-1504
 Customer Service Fax: (863) 533-7465

For Electronic Products:

PMT PRODUCTS
 820 Pennsylvania Blvd.
 Feasterville, PA 19053 U.S.A.
 Tel: (215) 355-6900
 Fax: (215) 354-1800
 www.ametekusg.com

For Diaphragm Seals:

M&G PRODUCTS
 8600 Somerset Drive
 Largo, FL 33773 U.S.A.
 Tel: (727) 536-7831
 Fax: (727) 539-6882
 www.ametek.com/tci





Process Gauges

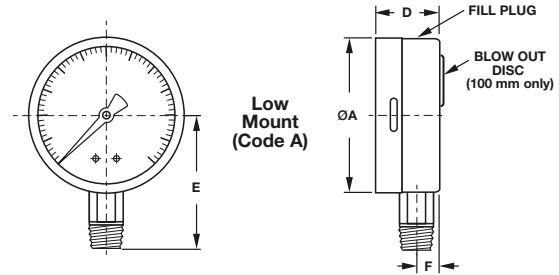
Model 656 Open Front Stainless Steel Pressure Gauges

PRESSURE RANGES

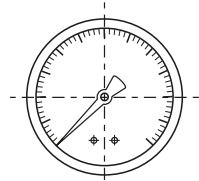
RANGE CODE	See Page A28	psi**
01		30 in. Hg-0
30		30 in. Hg-0-15
31		30 in. Hg-0-30
32		30 in. Hg-0-60
33		30 in. Hg-0-100
34		30 in. Hg-0-150
07		0-15
37		0-30
10		0-60
38		0-100
39		0-160
40		0-200
41		0-300
42		0-400
15		0-600
43		0-800
44		0-1000
17		0-1500
45		0-2000
46		0-3000
49		0-6000
50		0-10,000
22		0-14,500
23*		0-23,000

* Not available in 63 mm

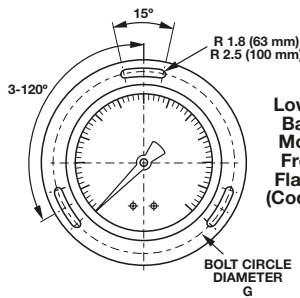
**Metric and dual scale dials are available. Please call Customer Service at (863) 534-1504 for more information.



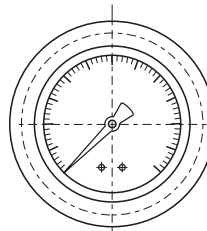
Low Mount (Code A)



Center-Back Mount (Code F) 63 mm Only



Lower-Back Mount Front Flange (Code N)



Lower-Back Mount U-Clamp Front Flange (Code T) 63 mm Only

63 and 100 mm Pressure Gauges

DIAL SIZE	MOUNTING CODE	UNIT	A	B	C	D	E	F	G	M
63 mm	A	inches	2.51	-	-	1.30	2.15	.44	-	-
	A	mm	63.7	-	-	33.0	55.7	11.0	-	-
63 mm	F	inches	2.51	2.44	-	1.30	2.24	-	-	-
	F	mm	63.7	62.0	-	33.0	57.0	-	-	-
63 mm	N	inches	2.51	2.61	3.39	1.30	2.24	.51	2.95	1.10
	N	mm	63.7	66.2	86.0	33.0	57.0	13.0	75.0	28.0
63 mm	T	inches	2.54	2.64	2.99	1.30	2.24	.51	-	1.10
	T	mm	64.4	67.0	76.0	33.0	57.0	13.0	-	28.0
100 mm	A	inches	3.99	-	-	1.97	3.27	.63	-	-
	A	mm	101.3	-	-	50.0	83.0	16.0	-	-
100 mm	N	inches	3.99	4.06	5.16	1.97	3.27	1.14	4.57	1.77
	N	mm	101.3	103.1	131.0	50.0	83.0	29.0	116.0	45.0

© 2002, by AMETEK, Inc. All rights reserved. 15M1102A (160126) Specifications are subject to change without notice. Visit our Web sites for the most up-to-date information.



For Gauges/Thermometers:

U.S. GAUGE
820 Pennsylvania Blvd.
Feasterville, PA 19053 U.S.A.
Tel: (215) 355-6900
Fax: (215) 354-1802
www.ametekusg.com

Customer Service Tel: (863) 534-1504
Customer Service Fax: (863) 533-7465

For Electronic Products:

PMT PRODUCTS
820 Pennsylvania Blvd.
Feasterville, PA 19053 U.S.A.
Tel: (215) 355-6900
Fax: (215) 354-1800
www.ametekusg.com

For Diaphragm Seals:

M&G PRODUCTS
8600 Somerset Drive
Largo, FL 33773 U.S.A.
Tel: (727) 536-7831
Fax: (727) 539-6882
www.ametek.com/tci





Process Gauges

Model 656 Open Front Stainless Steel Pressure Gauges

SPEC NUMBER SELECTION CHART

Model 656 (63 mm)	STEM MOUNTING 1/4-18 NPT			
Model Number	6562 Low Mount		6562 Center-Back Mount	
Bourdon Tube	316L Stainless Steel		316L Stainless Steel	
Connection	316L Stainless Steel		316L Stainless Steel	
Range*	Spec No.	Part No.	Spec No.	Part No.
0-30" Hg VAC	256000	656201AA4CD3A00	256024	656201AF4CD3A00
30"-0-15 psi	256001	656230AA4CD3A00	256025	656230AF4CD3A00
30"-0-30 psi	256002	656231AA4CD3A00	256026	656231AF4CD3A00
30"-0-60 psi	256003	656232AA4CD3A00	256027	656232AF4CD3A00
30"-0-100 psi	256004	656233AA4CD3A00	256028	656233AF4CD3A00
30"-0-150 psi	256005	656234AA4CD3A00	256029	656234AF4CD3A00
0-15 psi	256007	656207AA4CD3A00	256031	656207AF4CD3A00
0-30 psi	256008	656237AA4CD3A00	256032	656237AF4CD3A00
0-60 psi	256009	656210AA4CD3A00	256033	656210AF4CD3A00
0-100 psi	256010	656238AA4CD3A00	256034	656238AF4CD3A00
0-160 psi	256011	656239AA4CD3A00	256035	656239AF4CD3A00
0-200 psi	256012	656240AA4CD3A00	256036	656240AF4CD3A00
0-300 psi	256013	656241AA4CD3A00	256037	656241AF4CD3A00
0-400 psi	256014	656242AA4CD3A00	256038	656242AF4CD3A00
0-600 psi	256015	656215AA4CD3A00	256039	656215AF4CD3A00
0-1000 psi	256016	656244AA4CD3A00	256040	656244AF4CD3A00
0-1500 psi	256017	656217AA4CD3A00	256041	656217AF4CD3A00
0-2000 psi	256018	656245AA4CD3A00	256042	656245AF4CD3A00
0-3000 psi	256019	656246AA4CD3A00	256043	656246AF4CD3A00
0-4000 psi	256020	656247AA4CD3A00	256044	656247AF4CD3A00
0-5000 psi	256021	656248AA4CD3A00	256045	656248AF4CD3A00
0-6000 psi	256022	656249AA4CD3A00	256046	656249AF4CD3A00
0-10,000 psi	256023	656250AA4CD3A00	256047	656250AF4CD3A00

* Metric and dual scale dials are available. Please call Customer Service at (863) 534-1504 for more information.

© 2002, by AMETEK, Inc. All rights reserved. 15M1102A (160126) Specifications are subject to change without notice. Visit our Web sites for the most up-to-date information.



For Gauges/Thermometers:
U.S. GAUGE
 820 Pennsylvania Blvd.
 Feasterville, PA 19053 U.S.A.
 Tel: (215) 355-6900
 Fax: (215) 354-1802
 www.ametekusg.com

Customer Service Tel: (863) 534-1504
 Customer Service Fax: (863) 533-7465

For Electronic Products:
PMT PRODUCTS
 820 Pennsylvania Blvd.
 Feasterville, PA 19053 U.S.A.
 Tel: (215) 355-6900
 Fax: (215) 354-1800
 www.ametekusg.com

For Diaphragm Seals:
M&G PRODUCTS
 8600 Somerset Drive
 Largo, FL 33773 U.S.A.
 Tel: (727) 536-7831
 Fax: (727) 539-6882
 www.ametek.com/tci





Process Gauges

Model 656 Open Front Stainless Steel Pressure Gauges

SPEC NUMBER SELECTION CHART

Model 656 (63 mm)	FRONT FLANGE PANEL MOUNTING 1/4-18 NPT		U-CLAMP PANEL MOUNTING 1/4-18 NPT	
Model Number	6562 Low Back Mount		6562 Low Back Mount	
Bourdon Tube	316L Stainless Steel		316L Stainless Steel	
Connection	316L Stainless Steel		316L Stainless Steel	
Range*	Spec No.	Part No.	Spec No.	Part No.
0 - 30" Hg VAC	256048	656201AN4CD3A00	256072	656201AT4CD3A00
30" - 0 - 15 psi	256049	656230AN4CD3A00	256073	656230AT4CD3A00
30" - 0 - 30 psi	256050	656231AN4CD3A00	256074	656231AT4CD3A00
30" - 0 - 60 psi	256051	656232AN4CD3A00	256075	656232AT4CD3A00
30" - 0 - 100 psi	256052	656233AN4CD3A00	256076	656233AT4CD3A00
30" - 0 - 150 psi	256053	656234AN4CD3A00	256077	656234AT4CD3A00
0 - 15 psi	256055	656207AN4CD3A00	256079	656207AT4CD3A00
0 - 30 psi	256056	656237AN4CD3A00	256080	656237AT4CD3A00
0 - 60 psi	256057	656210AN4CD3A00	256081	656210AT4CD3A00
0 - 100 psi	256058	656238AN4CD3A00	256082	656238AT4CD3A00
0 - 160 psi	256059	656239AN4CD3A00	256083	656239AT4CD3A00
0 - 200 psi	256060	656240AN4CD3A00	256084	656240AT4CD3A00
0 - 300 psi	256061	656241AN4CD3A00	256085	656241AT4CD3A00
0 - 400 psi	256062	656242AN4CD3A00	256086	656242AT4CD3A00
0 - 600 psi	256063	656215AN4CD3A00	256087	656215AT4CD3A00
0 - 1000 psi	256064	656244AN4CD3A00	256088	656244AT4CD3A00
0 - 1500 psi	256065	656217AN4CD3A00	256089	656217AT4CD3A00
0 - 2000 psi	256066	656245AN4CD3A00	256090	656245AT4CD3A00
0 - 3000 psi	256067	656246AN4CD3A00	256091	656246AT4CD3A00
0 - 4000 psi	256068	656247AN4CD3A00	256092	656247AT4CD3A00
0 - 5000 psi	256069	656248AN4CD3A00	256093	656248AT4CD3A00
0 - 6000 psi	256070	656249AN4CD3A00	256094	656249AT4CD3A00
0 - 10,000 psi	256071	656250AN4CD3A00	256095	656250AT4CD3A00

* Metric and dual scale dials are available. Please call Customer Service at (863) 534-1504 for more information.

© 2002, by AMETEK, Inc. All rights reserved. 15M1102A (160126) Specifications are subject to change without notice. Visit our Web sites for the most up-to-date information.



For Gauges/Thermometers:
U.S. GAUGE
 820 Pennsylvania Blvd.
 Feasterville, PA 19053 U.S.A.
 Tel: (215) 355-6900
 Fax: (215) 354-1802
 www.ametekusg.com

Customer Service Tel: (863) 534-1504
 Customer Service Fax: (863) 533-7465

For Electronic Products:
PMT PRODUCTS
 820 Pennsylvania Blvd.
 Feasterville, PA 19053 U.S.A.
 Tel: (215) 355-6900
 Fax: (215) 354-1800
 www.ametekusg.com

For Diaphragm Seals:
M&G PRODUCTS
 8600 Somerset Drive
 Largo, FL 33773 U.S.A.
 Tel: (727) 536-7831
 Fax: (727) 539-6882
 www.ametek.com/tci





Process Gauges

Model 656 Open Front Stainless Steel Pressure Gauges

SPEC NUMBER SELECTION CHART

Model 656 (100 mm)	STEM MOUNTING Low Mount		FRONT FLANGE PANEL MOUNTING Low Back Mount			
	Model Number	6566 Low Mount, 1/4-18 NPT	6566 Low Mount, 1/2-14 NPT	6566 Lower-Back Mount, 1/4-18 NPT		
Bourdon Tube	316L Stainless Steel		316L Stainless Steel			
Connection	316L Stainless Steel		316L Stainless Steel			
Range*	Spec No.	Part No.	Spec No.	Part No.	Spec No.	Part No.
0-30" Hg VAC	356000	656601AA3CD3A00	356025	656601AA3ED3A00	356050	656601AN3CD3A00
30"- 0-15 psi	356001	656630AA3CD3A00	356026	656630AA3ED3A00	356051	656630AN3CD3A00
30"- 0-30 psi	356002	656631AA3CD3A00	356027	656631AA3ED3A00	356052	656631AN3CD3A00
30"- 0-60 psi	356003	656632AA3CD3A00	356028	656632AA3ED3A00	356053	656632AN3CD3A00
30"- 0-100 psi	356004	656633AA3CD3A00	356029	656633AA3ED3A00	356054	656633AN3CD3A00
30"- 0-150 psi	356005	656634AA3CD3A00	356030	656634AA3ED3A00	356055	656634AN3CD3A00
0-15 psi	356007	656607AA3CD3A00	356032	656607AA3ED3A00	356057	656607AN3CD3A00
0 -30 psi	356008	656637AA3CD3A00	356033	656637AA3ED3A00	356058	656637AN3CD3A00
0 -60 psi	356009	656610AA3CD3A00	356034	656610AA3ED3A00	356059	656610AN3CD3A00
0 -100 psi	356010	656638AA3CD3A00	356035	656638AA3ED3A00	356060	656638AN3CD3A00
0 -160 psi	356011	656639AA3CD3A00	356036	656639AA3ED3A00	356061	656639AN3CD3A00
0 -200 psi	356012	656640AA3CD3A00	356037	656640AA3ED3A00	356062	656640AN3CD3A00
0 -300 psi	356013	656641AA3CD3A00	356038	656641AA3ED3A00	356063	656641AN3CD3A00
0 -400 psi	356014	656642AA3CD3A00	356039	656642AA3ED3A00	356064	656642AN3CD3A00
0 -600 psi	356015	656615AA3CD3A00	356040	656615AA3ED3A00	356065	656615AN3CD3A00
0 -800 psi	356016	656643AA3CD3A00	356041	656643AA3ED3A00	356066	656643AN3CD3A00
0 -1000 psi	356017	656644AA3CD3A00	356042	656644AA3ED3A00	356067	656644AN3CD3A00
0 -1500 psi	356018	656617AA3CD3A00	356043	656617AA3ED3A00	356068	656617AN3CD3A00
0 -2000 psi	356019	656645AA3CD3A00	356044	656645AA3ED3A00	356069	656645AN3CD3A00
0 -3000 psi	356020	656646AA3CD3A00	356045	656646AA3ED3A00	356070	656646AN3CD3A00
0 -6000 psi	356021	656649AA3CD3A00	356046	656649AA3ED3A00	356071	656649AN3CD3A00
0 -10,000 psi	356022	656650AA3CD3A00	356047	656650AA3ED3A00	356072	656650AN3CD3A00
0 -14,500 psi	356023	656622AA3CD3A00	356048	656622AA3ED3A00	356073	656622AN3CD3A00
0 -23,000 psi	356024	656623AA3CD3A00	356049	656623AA3ED3A00	356074	656623AN3CD3A00

* Metric and dual scale dials are available. Please call Customer Service at (863) 534-1504 for more information.



For Gauges/Thermometers:
U.S. GAUGE
 820 Pennsylvania Blvd.
 Feasterville, PA 19053 U.S.A.
 Tel: (215) 355-6900
 Fax: (215) 354-1802
 www.ametekusg.com

Customer Service Tel: (863) 534-1504
 Customer Service Fax: (863) 533-7465

For Electronic Products:
PMT PRODUCTS
 820 Pennsylvania Blvd.
 Feasterville, PA 19053 U.S.A.
 Tel: (215) 355-6900
 Fax: (215) 354-1800
 www.ametekusg.com

For Diaphragm Seals:
M&G PRODUCTS
 8600 Somerset Drive
 Largo, FL 33773 U.S.A.
 Tel: (727) 536-7831
 Fax: (727) 539-6882
 www.ametek.com/tci





Process Gauges

Model 656 Open Front Stainless Steel Pressure Gauges

ORDERING INFORMATION

Model 656

NOMINAL DIAMETER _____	-6
2 = 63 mm	
6 = 100 mm	
RANGE Refer to Pressure Range Table (see page A24) _____	-44
UNITS OF MEASURE _____	-A
A = psi	
B = psi/bar	
C = psi/kPa	
D = bar	
E = kPa	
F = kg/cm ²	
G = psi/kgcm ²	
H = MPa	
MOUNTING TYPE (Refer to Mounting Type and Dimension) _____	-A
A = Low mount	
F = Center-back mount (63 mm only)	
N = Lower-back mount, front flange	
T = Lower-back mount, U-clamp (63 mm only)	
ACCURACY _____	-3
3 = 1.0 (100 mm)	
4 = 1.6 (63 mm)	
CONNECTION _____	-E
C = 1/4 inch (63 mm)	
E = 1/2 inch (100 mm)	
CONNECTION TYPE _____	-D
D = NPT	
(Contact factory for other connections)	
PRESSURE CONNECTION MATERIAL AND BOURDON TUBE _____	-3
3 = 316L stainless steel	
FILL FLUID _____	-A
A = No fill	
G = Glycerine	
M = Mineral oil	
S = Silicone DC-200	
OPTIONS* _____	-00
00 = No options	
CL = Oxygen cleaned	
SR = Shatter-resistant glass window (63 mm only)	

* For additional options and codes, please contact your nearest AMETEK USG Stocking Distributor, Product Marketing at (215) 355-6900, or visit our web site at www.ametekusg.com

Example:

656-6-44-A-A-3-E-D-3-00

Model 656 100 mm diameter, 0-1,000 psi scale, low mount, 1.0% accuracy, 1/2 inch connection, NPT type connection, 316L stainless steel, with no fill, no options

© 2002, by AMETEK, Inc. All rights reserved. 15M1102A (160126) Specifications are subject to change without notice. Visit our Web sites for the most up-to-date information.

AMETEK[®]

ISO 9001 REGISTERED MANUFACTURER

For Gauges/Thermometers:

U.S. GAUGE
820 Pennsylvania Blvd.
Feasterville, PA 19053 U.S.A.
Tel: (215) 355-6900
Fax: (215) 354-1802
www.ametekusg.com

Customer Service Tel: (863) 534-1504
Customer Service Fax: (863) 533-7465

For Electronic Products:

PMT PRODUCTS
820 Pennsylvania Blvd.
Feasterville, PA 19053 U.S.A.
Tel: (215) 355-6900
Fax: (215) 354-1800
www.ametekusg.com

For Diaphragm Seals:

M&G PRODUCTS
8600 Somerset Drive
Largo, FL 33773 U.S.A.
Tel: (727) 536-7831
Fax: (727) 539-6882
www.ametek.com/tci