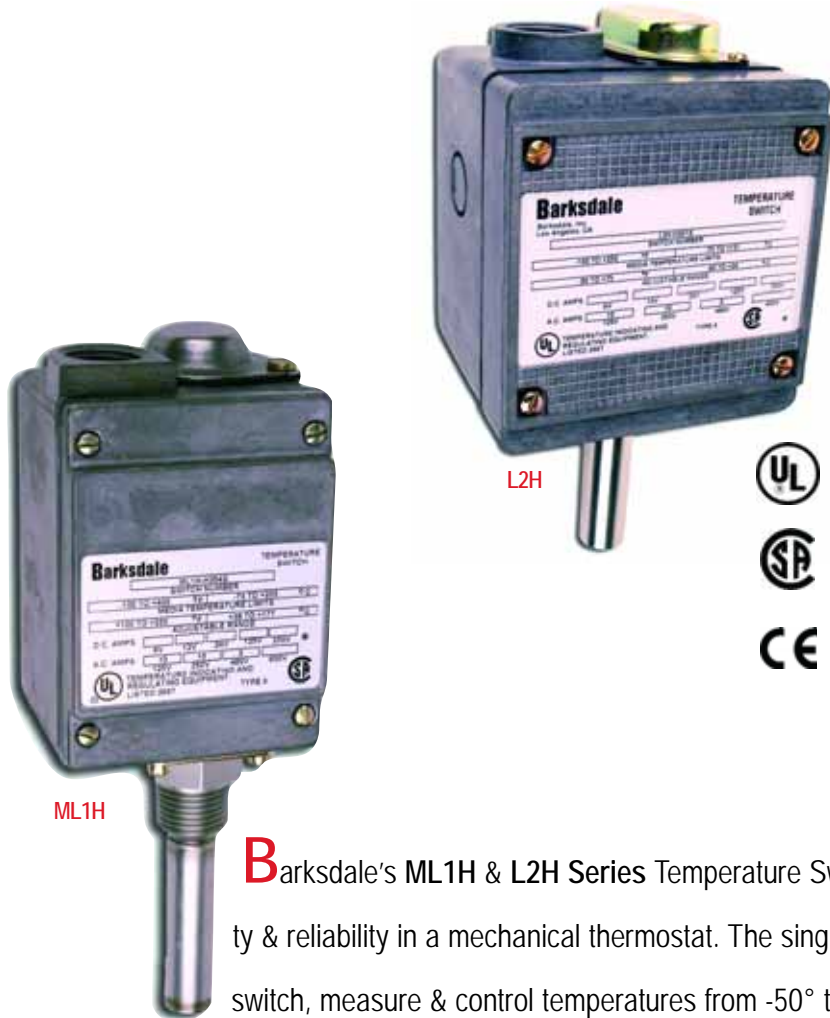


ML1H, L2H Temperature Switch

Local Mount Temperature Switch

Series ML1H, L2H



- ✦ Reliable & Accurate
- ✦ +/- 1% Repeatability
- ✦ Nema 4 & IP 65
- ✦ UL, CSA & CE Approved

ML1H

L2H

Barksdale's ML1H & L2H Series Temperature Switches provide unmatched performance, quality & reliability in a mechanical thermostat. The single set point ML1H and dual set point L2H, can switch, measure & control temperatures from -50° to 450°F (-45° to 232°C), while the optional adjustable differential provides precise control. These locally mounted switches provide fast response and accurate measurements at the temperature source. Both the ML1H & L2H Series are electrically rated for 10 amps @ 125/250 VAC & 3 amps @ 480 VAC. Standard 3- & 6-pin terminal strips simplify installation. The ML1H & L2H Series are rated NEMA 4 & 13; the optional NEMA 4X construction protects the rugged die-cast aluminum enclosure from corrosive environments. Copper or stainless steel temperature sensors are available to handle a wide range of media. Optional thermowells allow the sensor to work in pressurized vessels to 5000 psi. UL listed & CSA approved, ML1H & L2H Series Temperature Switches are perfect for your temperature sensing needs.

Barksdale Exceeding Your Expectations Through Our People, Products and Performance
CONTROL PRODUCTS

ML1H, L2H Temperature Switch

When Temperature Matters, Call Barksdale

For many years, Barksdale temperature switches have been switching, measuring and controlling critical processes throughout the world.

Protect Your Equipment with Barksdale

Barksdale temperature switches prevent damage to heavy industrial equipment by monitoring the temperature of engine fluids and protecting against thermal overloads. Hydraulic power units are protected by controlling the temperature of fluids in systems in reservoirs.

In cold climates, Barksdale temperature switches control heating devices that prevent pipes, valves and fittings from freezing preventing expensive loss and downtime. Barksdale thermostats also control the temperature in process piping to maintain the proper flow of media.

Barksdale temperature switches can be used in a variety of applications:

- Hydraulic Power Units
- Combustion Engines
- Tanks and Reservoirs
- Gearboxes
- Pumps
- Compressors
- Machine Tools and Industrial Equipment
- Farm & Construction Machinery
- Process Equipment



Need Something Special?

If you have special product requirements, we can help. Barksdale specializes in custom design solutions to meet your needs. We have design engineers and technical specialists who are experts in solving your unique temperature problems. Our technology and resources are at your disposal.

Need More Information?

We are only a phone call away.

Toll-Free: 1-800-835-1060.

ML1H, L2H Temperature Switch

General Description

Electrical Characteristics

All models incorporate Underwriters' Laboratories, Inc. and CSA listed single pole double throw snap-action switching elements. Switches may be wired normally open or normally closed. AC value at 75% Power Factor —10 amps 125, 250 volts AC, 3 amps 480 volts AC. Automatically reset by snap-action of switch.

Electrical Ratings

AC value at 75% Power Factor —10 amps 125, 250 volts AC, 3 amps 480 volts AC. Automatically reset by snap-action of switch.

Performance Characteristics

Accuracy

+/- 1% of mid - 60% of full range. At constant ambient +/- 0.5% of full scale.

Switch

Single: One (1) SPDT, Dual Switching, 2 Independent SPDT Circuits

Adjustment

Tamper resistant External Adjustment

Physical

Weight

Single: Approximate 1.5 lbs.,
Dual: Approximate 3.0 lbs.

Enclosure/Housing

Watertight and Dusttight Indoor and Outdoor (NEMA 4) Oil-tight and Dust-tight Indoor (NEMA 13).

Elect. Connection

Single: 3-Pin Terminal Strip
Dual: 6-Pin Terminal Strip

Wetted Materials

Brass or 304 Stainless Steel

Approvals/Listings

Underwriters' Laboratories, Inc. and Canadian Standard Assoc. are listed under Temperature indicating and regulating equipment

UL

File No. E56247, Guide No. XAPX

CSA

File No. LR34555,

Guide 400-E-O. Class 4813

Environmental

Temperature Range

See Operating Characteristics and Ordering Data Chart

Wire Coding

Circuit #1

Common: - Purple

Low Circuit

Normally Closed - Blue

Normally Open - Red

Circuit #2 (L2H only)

Common - Brown

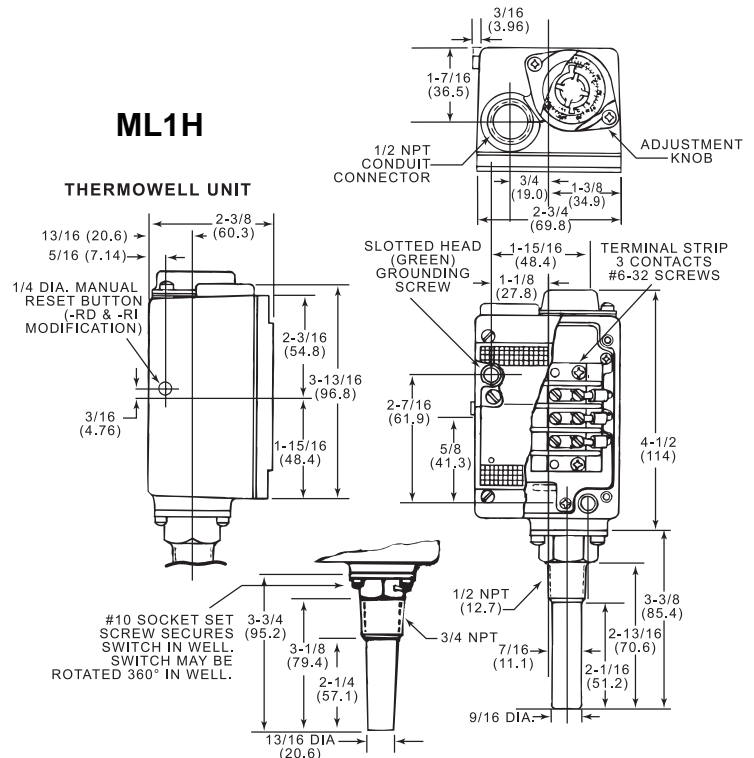
High Circuit

Normally Closed - Orange

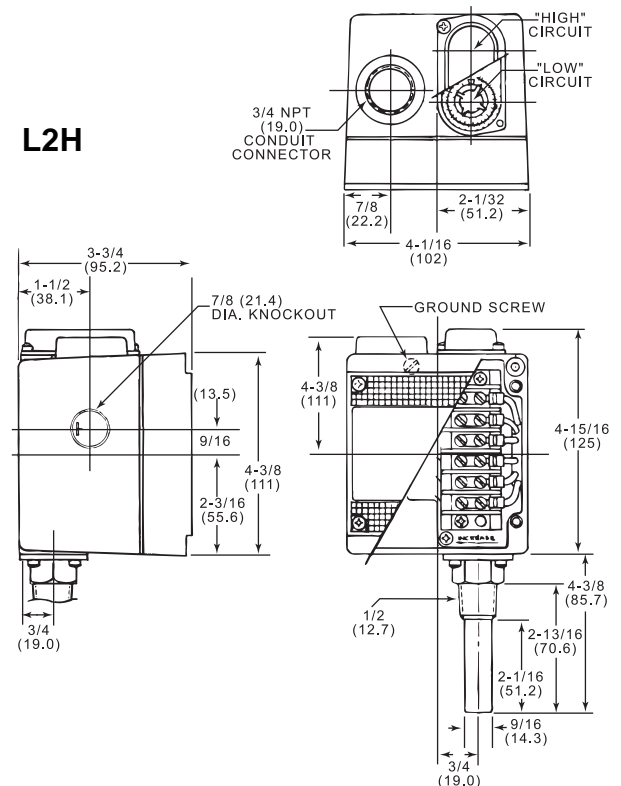
Normally Open - Yellow

Standard Options/Modifications

See Configurator Page



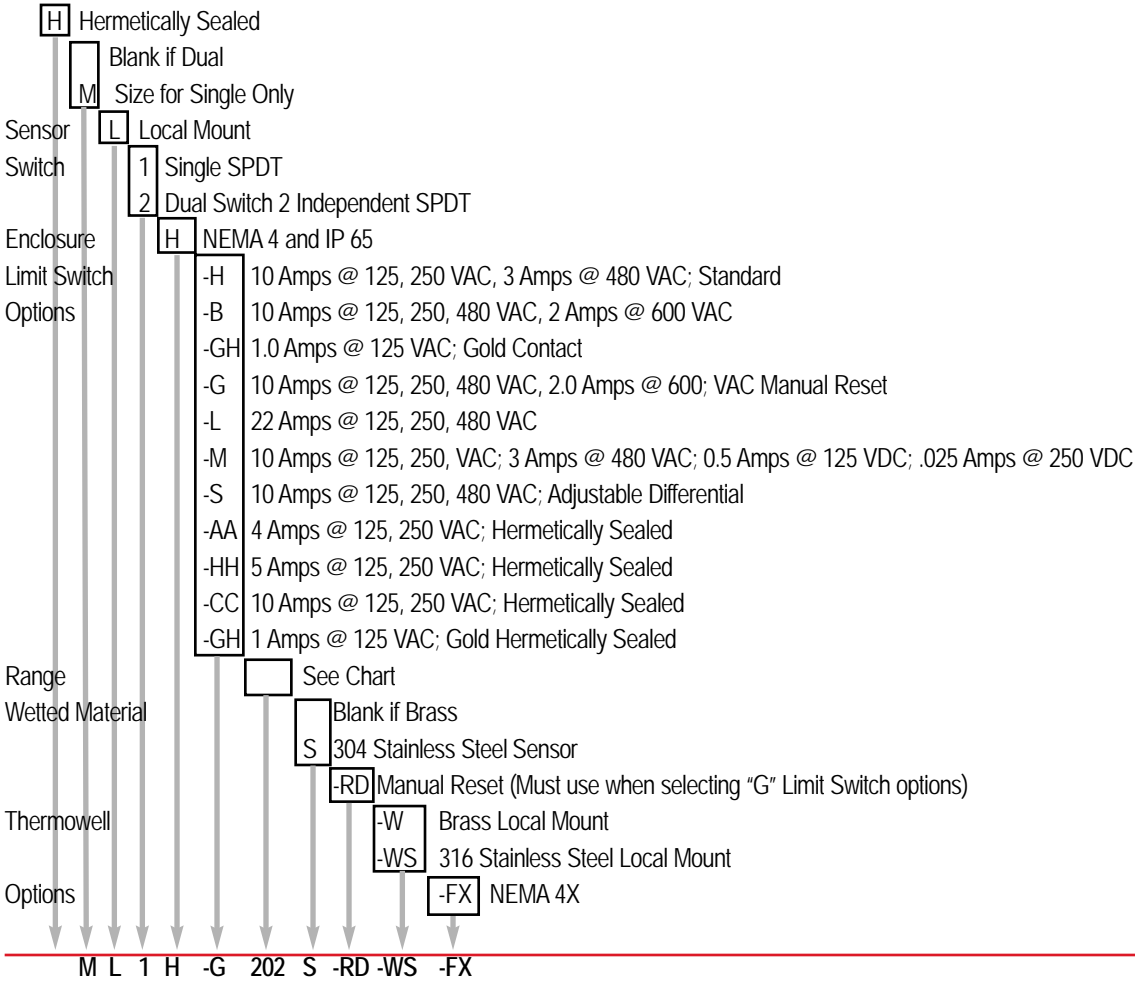
L2H



ML1H, L2H Temperature Switch

Local Mount Temperature Switch

Series ML1H, L2H



Example: ML1H-G202S-RD-WS-FX

Operating Characteristics

Range	Adjustable Range				Media Temperature Limit (Proof)				Differential (Approx.) Liquid		Calibrated Dial Adjustment
	°F		°C		°F		°C		°F	°C	
201	-50	+75	-45	+24	-100	+250	-73	+121	1 to 3	.5 to 1.6	Calibrated
202	+15	+140	-9	+60	-100	+250	-73	+121	1 to 3	.5 to 1.6	2° Subdivision
203	+75	+200	+24	+93	-100	+250	-73	+121	1 to 3	.5 to 1.6	125° Span
351	+100	+225	+38	+107	-100	+400	-73	+205	1 to 3	.5 to 1.6	
204	-50	+200	-45	+93	-100	+250	-73	+121	1 to 3	1.6 to 3.3	5° Subdivision
354	+100	+350	+38	+177	-100	+400	-73	+205	1 to 3	1.6 to 3.3	250° Span
454	+150	+450	+66	+232	0	+500	-18	+260	3 to 6	1.6 to 3.3	10° Subdivision 300° Span

NOTE: When selecting the manual reset option on dual setting switches (L2H), the manual reset limit switch will be on the high circuit. The low circuit limit switch must be specified by the customer.

NOTE: changing limit switch will effect dead band; See sales drawing.

Barksdale
CONTROL PRODUCTS

3211 Fruitland Avenue • Los Angeles, CA 90058 • ☎ 800-835-1060 • Fax: 323-589-3463 • www.barksdale.com