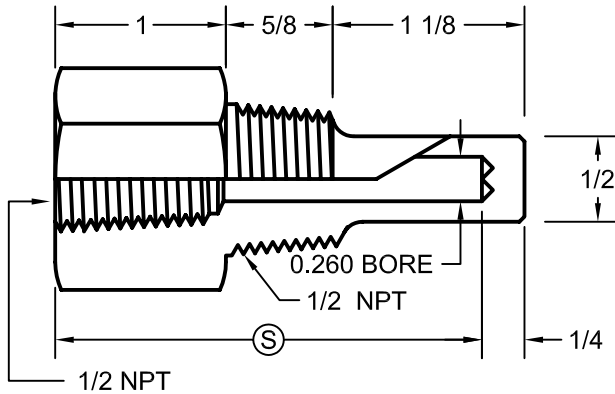


STANDARD THREADED THERMOWELL

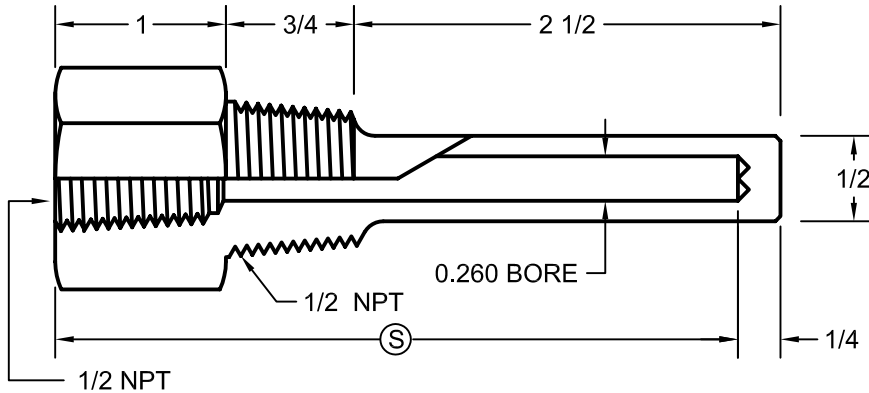
FOR 1/4" DIAMETER ELEMENTS

S = BORE DEPTH

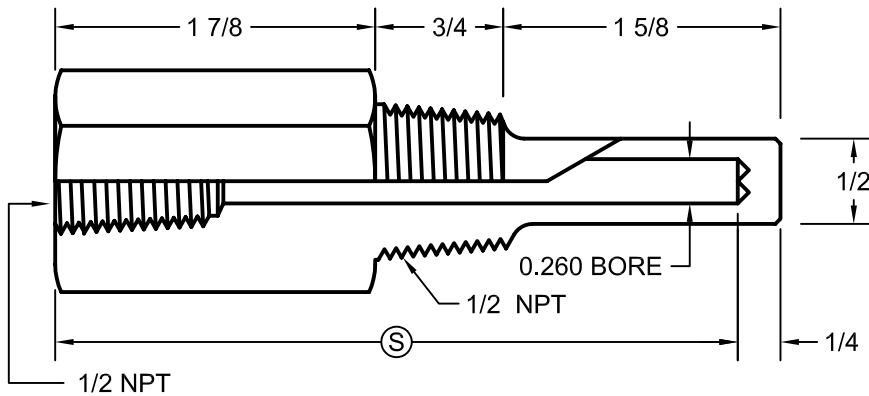
(INSTRUMENT ELEMENT LENGTH INCLUDING THREADS)



PART NO.	S	HEX
49	2 1/2	1 1/8



PART NO.	S	HEX
99	4	1 1/8



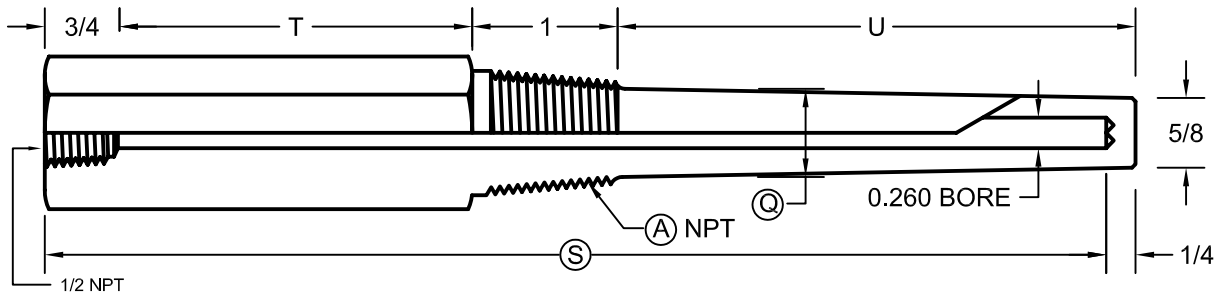
PART NO.	S	HEX
99L	4	1 1/8

STANDARD THREADED THERMOWELL

FOR 1/4" DIAMETER ELEMENTS

S = BORE DEPTH

(INSTRUMENT ELEMENT LENGTH INCLUDING THREADS)



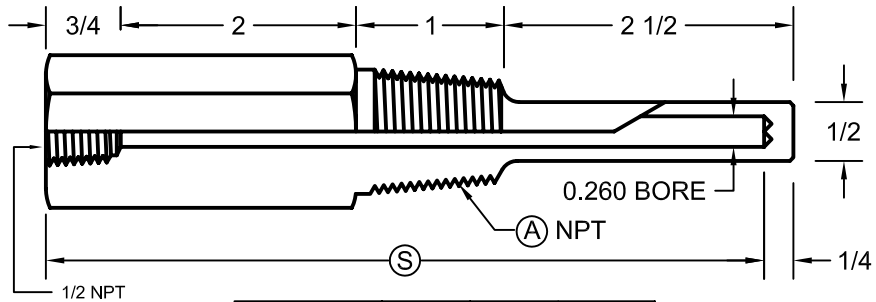
PART NO.	A	S	T	Q	HEX
350HL-U2 1/2	3/4	6	2	7/8	1 1/8
350HL-U4 1/2	3/4	9	3	7/8	1 1/8
350HL-U7 1/2	3/4	12	3	7/8	1 1/8
350HL-U10 1/2	3/4	15	3	7/8	1 1/8
350HL-U13 1/2	3/4	18	3	7/8	1 1/8
350HL-U19 1/2	3/4	24	3	7/8	1 1/8
351HL-U2 1/2	1	6	2	1-1/16	1 3/8
351HL-U4 1/2	1	9	3	1-1/16	1 3/8
351HL-U7 1/2	1	12	3	1-1/16	1 3/8
351HL-U10 1/2	1	15	3	1-1/16	1 3/8
351HL-U13 1/2	1	18	3	1-1/16	1 3/8
351HL-U19 1/2	1	24	3	1-1/16	1 3/8

STANDARD THREADED THERMOWELL

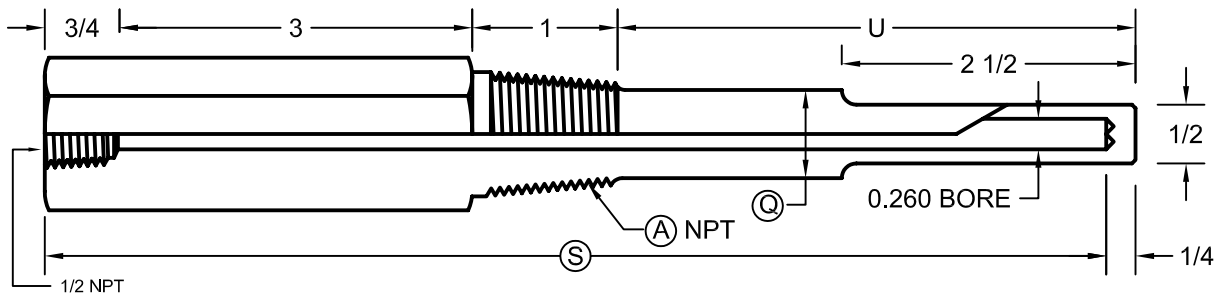
FOR 1/4" DIAMETER ELEMENTS

S = BORE DEPTH

(INSTRUMENT ELEMENT LENGTH INCLUDING THREADS)



PART NO.	A	S	HEX
299L	1/2	6	1 1/8
300L	3/4	6	1 1/8
301L	1	6	1 3/8



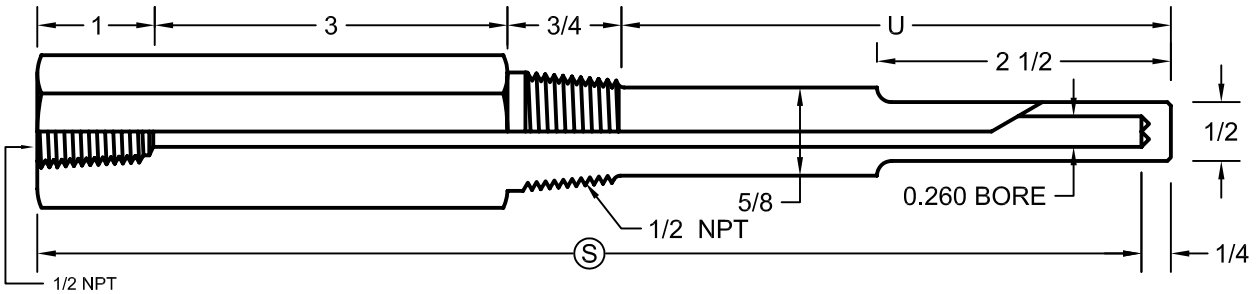
PART NO.	A	S	Q	HEX
500L-U4 1/2	3/4	9	3/4	1 1/8
500L-U7 1/2	3/4	12	3/4	1 1/8
500L-U10 1/2	3/4	15	3/4	1 1/8
500L-U13 1/2	3/4	18	3/4	1 1/8
500L-U19 1/2	3/4	24	3/4	1 1/8
501L-U4 1/2	1	9	7/8	1 3/8
501L-U7 1/2	1	12	7/8	1 3/8
501L-U10 1/2	1	15	7/8	1 3/8
501L-U13 1/2	1	18	7/8	1 3/8
501L-U19 1/2	1	24	7/8	1 3/8

STANDARD THREADED THERMOWELL

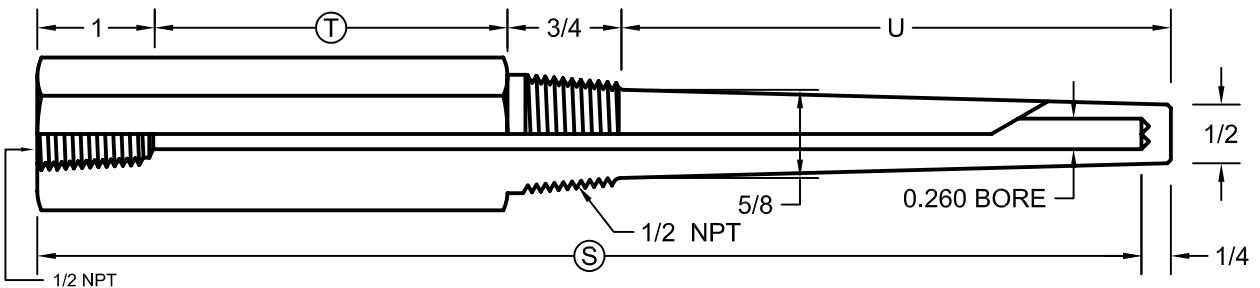
FOR 1/4" DIAMETER ELEMENTS

S = BORE DEPTH

(INSTRUMENT ELEMENT LENGTH INCLUDING THREADS)



PART NO.	S	HEX
499L-U4 1/2	9	1 1/8
499L-U7 1/2	12	1 1/8
499L-U10 1/2	15	1 1/8
499L-U13 1/2	18	1 1/8
499L-U19 1/2	24	1 1/8



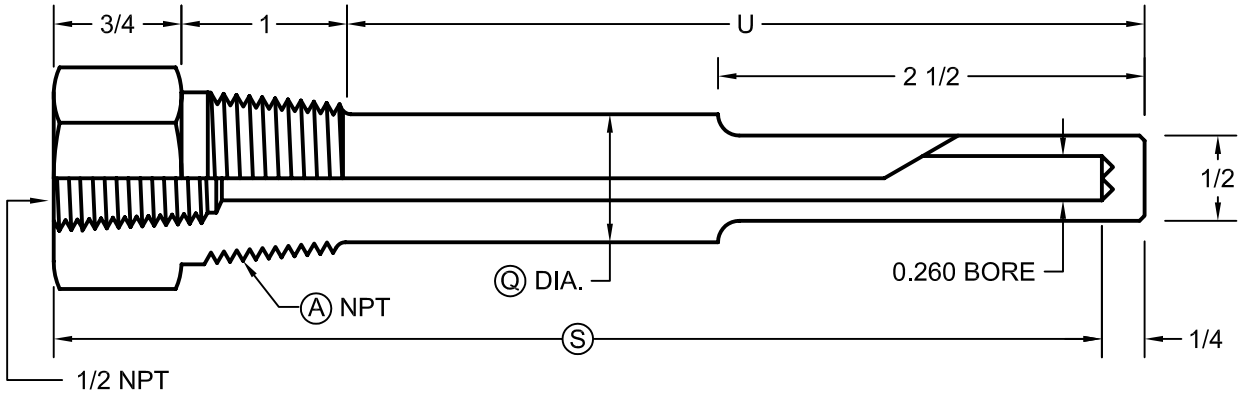
PART NO.	S	T	HEX
349HL-U2 1/2	6	2	1 1/8
349HL-U4 1/2	9	3	1 1/8
349HL-U7 1/2	12	3	1 1/8
349HL-U10 1/2	15	3	1 1/8
349HL-U13 1/2	18	3	1 1/8
349HL-U19 1/2	24	3	1 1/8

STANDARD THREADED THERMOWELL

FOR 1/4" DIAMETER ELEMENTS

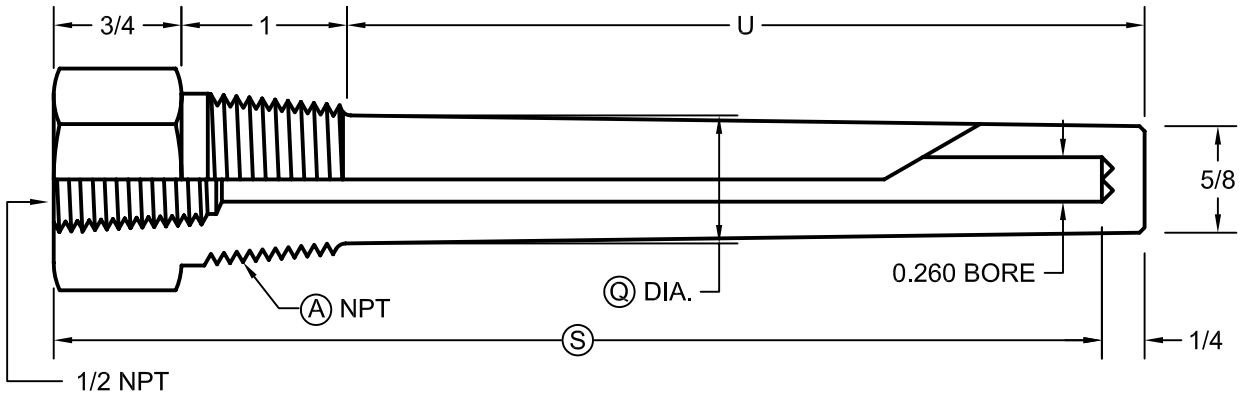
S = BORE DEPTH

(INSTRUMENT ELEMENT LENGTH INCLUDING THREADS)



PART NO.	A	S	Q	HEX
200-U4 1/2	3/4	6	3/4	1 1/8
200-U7 1/2	3/4	9	3/4	1 1/8
200-U10 1/2	3/4	12	3/4	1 1/8
200-U13 1/2	3/4	15	3/4	1 1/8
200-U16 1/2	3/4	18	3/4	1 1/8
200-U22 1/2	3/4	24	3/4	1 1/8

PART NO.	A	S	Q	HEX
201-U4 1/2	1	6	7/8	1 3/8
201-U7 1/2	1	9	7/8	1 3/8
201-U10 1/2	1	12	7/8	1 3/8
201-U13 1/2	1	15	7/8	1 3/8
201-U16 1/2	1	18	7/8	1 3/8
201-U22 1/2	1	24	7/8	1 3/8



PART NO.	A	S	Q	HEX
250H-U2 1/2	3/4	4	7/8	1 1/8
250H-U4 1/2	3/4	6	7/8	1 1/8
250H-U7 1/2	3/4	9	7/8	1 1/8
250H-U10 1/2	3/4	12	7/8	1 1/8
250H-U13 1/2	3/4	15	7/8	1 1/8
250H-U16 1/2	3/4	18	7/8	1 1/8
250H-U22 1/2	3/4	24	7/8	1 1/8

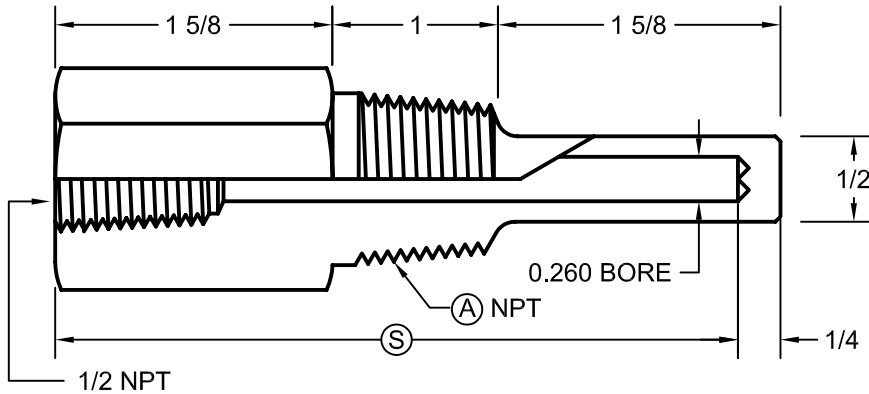
PART NO.	A	S	Q	HEX
251H-U2 1/2	1	4	1-1/16	1 3/8
251H-U4 1/2	1	6	1-1/16	1 3/8
251H-U7 1/2	1	9	1-1/16	1 3/8
251H-U10 1/2	1	12	1-1/16	1 3/8
251H-U13 1/2	1	15	1-1/16	1 3/8
251H-U16 1/2	1	18	1-1/16	1 3/8
251H-U22 1/2	1	24	1-1/16	1 3/8

STANDARD THREADED THERMOWELL

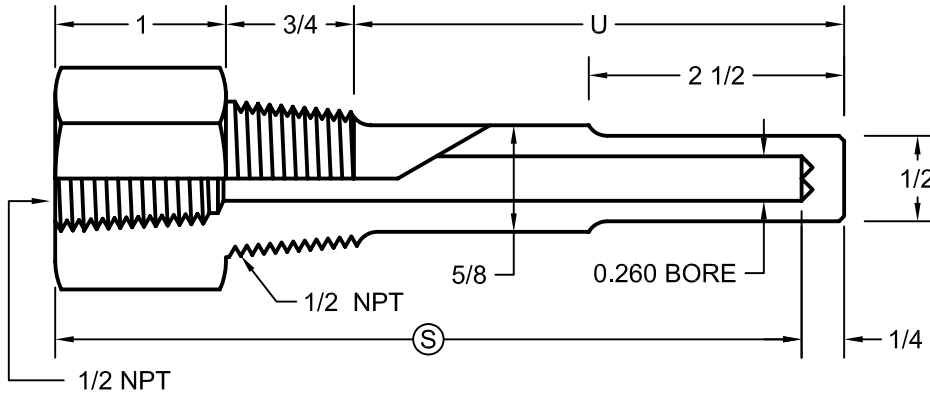
FOR 1/4" DIAMETER ELEMENTS

S = BORE DEPTH

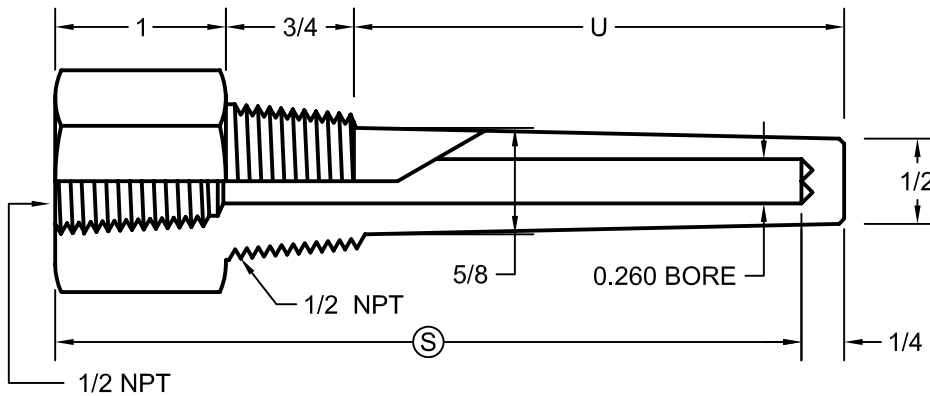
(INSTRUMENT ELEMENT LENGTH INCLUDING THREADS)



PART NO.	A	S	HEX
100L	3/4	4	1 1/8
101L	1	4	1 3/8



PART NO.	S	HEX
185-U4 1/2	6	1 1/8
185-U7 1/2	9	1 1/8
185-U10 1/2	12	1 1/8
185-U13 1/2	15	1 1/8
185-U16 1/2	18	1 1/8
185-U22 1/2	24	1 1/8



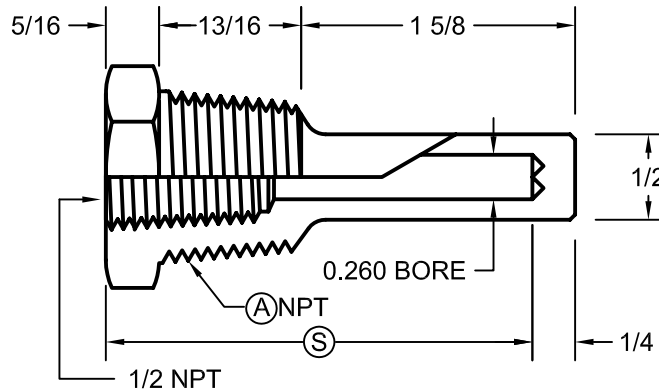
PART NO.	S	HEX
249H-U2 1/2	4	1 1/8
249H-U4 1/2	6	1 1/8
249H-U7 1/2	9	1 1/8
249H-U10 1/2	12	1 1/8
249H-U13 1/2	15	1 1/8
249H-U16 1/2	18	1 1/8
249H-U22 1/2	24	1 1/8

STANDARD THREADED THERMOWELL

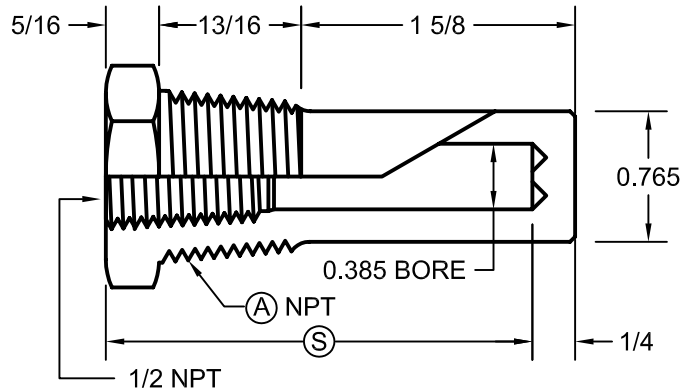
FOR 1/4" AND 3/8" DIAMETER ELEMENTS

S = BORE DEPTH

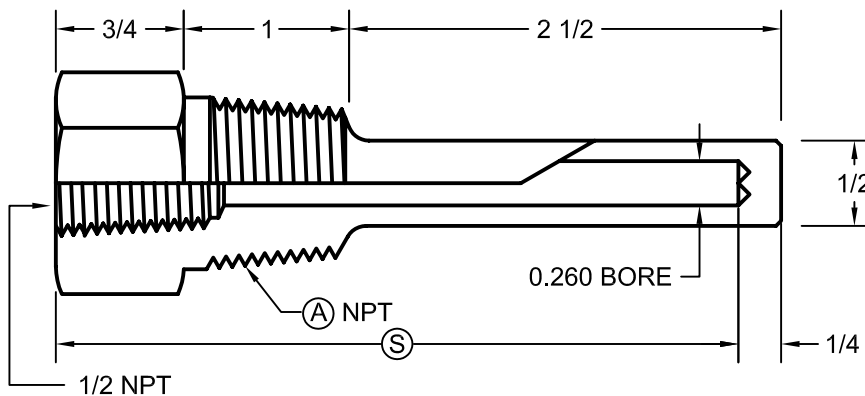
(INSTRUMENT ELEMENT LENGTH INCLUDING THREADS)



PART NO.	A	S	HEX
50	3/4	2 1/2	1 1/8
51	1	2 1/2	1 3/8



PART NO.	A	S	HEX
52	3/4	2 1/2	1 1/8
53	1	2 1/2	1 3/8



PART NO.	A	S	HEX
100	3/4	4	1 1/8
101	1	4	1 3/8