

Multi Level Switch

UNS-1000 Series

Formerly Series BLS 700

Features

- ▶ Fully customizable
- ▶ Up to 5 independent switch points
- ▶ Reversible switch logic
- ▶ Suitable for high viscosity liquids
- ▶ Optional integral temperature switch
- ▶ Hermetically sealed reed switches

Applications

- ▶ Sump tanks
- ▶ Hydraulic power units
- ▶ Storage tanks
- ▶ Solvent recovery systems
- ▶ Lube oil console systems
- ▶ Marine applications



General Specifications*

Max. Operating Pressure:	220 psig (15 bar), NBR (BUNA), and SS float
Minimum Specific Gravity:	NBR - .57 g/cm ³ SS - .71 g/cm ³
Mounting Position:	Vertical, ±30°, through top or bottom
Protection Class:	IP65 for ST-, KL- and PG-design IP67, IP68 on request IP54 for K-design

* See Order Number for additional options.

Operating Temperature:	+14 °F to +221 °F (-10 °C to +105 °C), PVC-cable
Special Design Options:	(DR - Damping tube) on request HT - High temperature silicone-cable (-40 °F to +302 °F (-40 °C to +150 °C)) U - Mounting through bottom PT100 - PT100-element (VV - Vertical adjustment) on request Exi - ATEX approval EEx ia
Contact Mode:	NO or NC are defined on the basis of an empty tank and for installation through the top
Weight:	Dependent on length and design

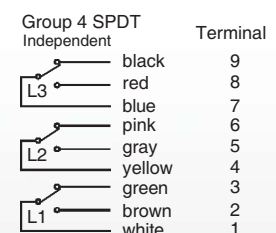
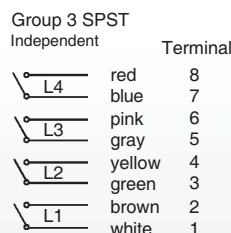
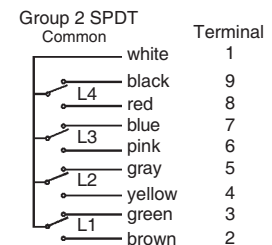
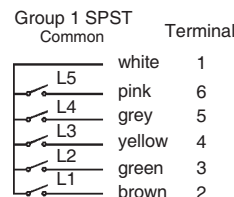
Max. Switchpoints

	KL6C AL Terminal Box	KL12C AL Terminal Box	ST1 DIN Connector	PG7 Cable gland
Connect. group 1	5	5	2	3
Connect. group 2	2	4	1	1
Connect. group 3	3	4	1	2
Connect. group 4	2	3	1	1

Variations

Material	Mounting	Electrical Connection	Float
Stainless Steel (VA)	1" NPT (T1NPT) Blind flange (FLA3)	DIN Connector (ST1) Terminal box (KL6C or KL12C) Cable gland (PG7) PVC Cable (K)	316 Stainless Steel (VA27)
	1/8" NPT (T1/8NPT) 1/2" NPT (T1/2NPT)	Cable gland (PG7) PVC Cable (K)	
Brass (MS)	1" NPT (T1NPT)	DIN Connector (ST1) Terminal box (KL6C or KL12C) Cable gland (PG7) PVC Cable (K)	NBR (BUNA-N) (BN25)
	1/8" NPT (T1/8NPT) 1/2" NPT (T1/2NPT)	Cable gland (PG7) PVC Cable (K)	

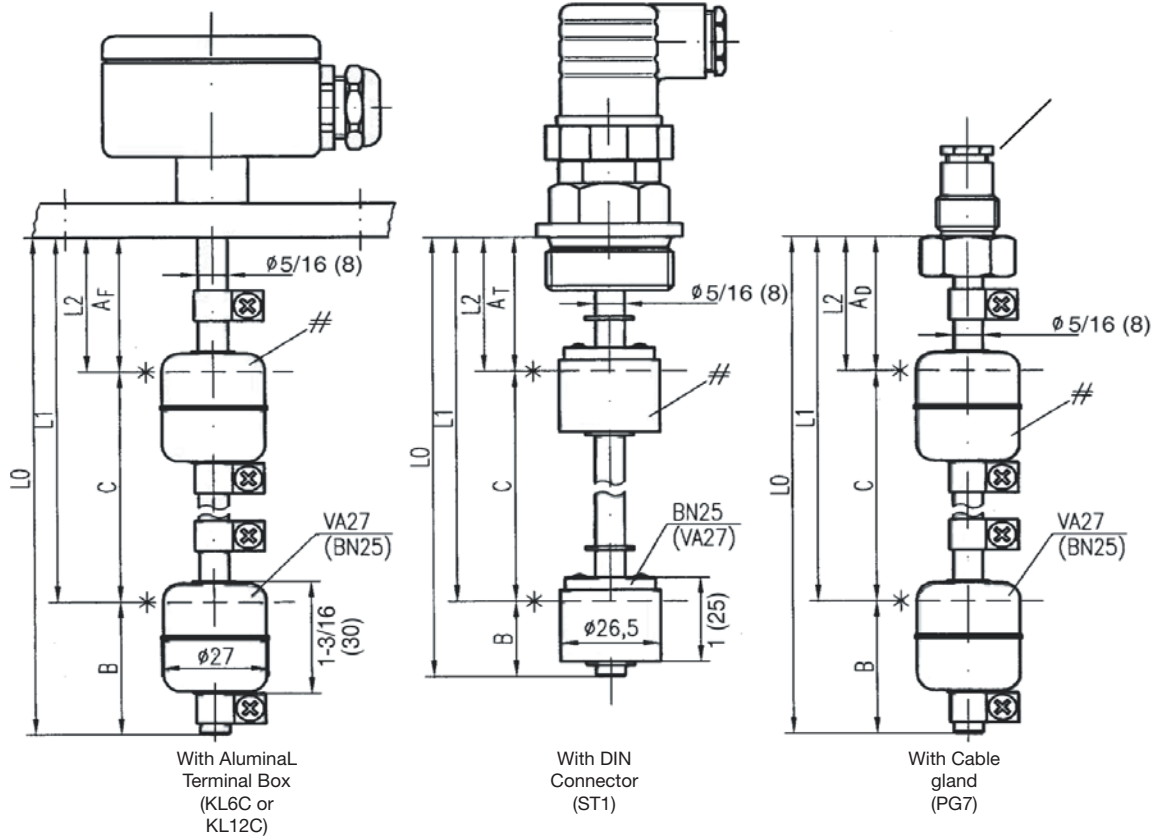
Wiring Color / Code



Barksdale
CONTROL PRODUCTS

Barksdale, Inc./Barksdale GmbH
A Subsidiary of Crane Co.

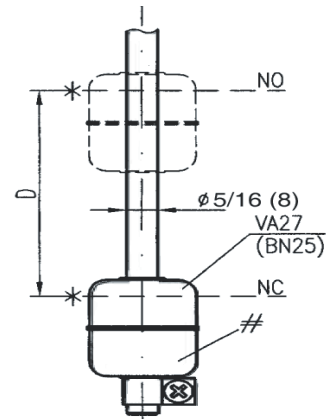
Dimensions in inch (mm)



1. Length tolerance $\pm 1/8"$ (± 3 mm)
2. L0 = max. 40 in. (1000 mm)

- * Immersion depth at density 1:
 VA27 = 13/16 in ± 0.1 in (21 ± 2 mm)
 BN25 = 1/2 in ± 0.1 in (13 ± 2 mm)

- # Float position:
 VA27 = NO/NC \Rightarrow see float marking
 SPDT \Rightarrow NO-function
 BN25 = NO \Rightarrow compound points at bottom
 NC \Rightarrow compound points at top
 SPDT \Rightarrow compound points at bottom



Dual switching
(1 float for 2 switchpoints)

Dimensions Float type	Min. distances in inch/mm					
	A _F	A _T	A _D	B	C	D
VA27	1/26	1.65/42	1.5/38	1.6/40	2.56/65	2.56/32
BN25	--	1.45/37	1.3/34	1/25	1.78/45	1.25/32

(When using -DR: Dimension B + 3/4" (20 mm)!) on request

Multi Level Switch

UNS-1000 Series

UNS-1000 Series Order Form

Formerly Series BLS 700

Check Boxes to Select Specification Requirements

Enter Order #:

--	--	--	--	--	--	--	--

Product Configurator

Example	UNS-1000	VA	T1NPT	KL6C	VA27	L2	2.1	-U-HT-(DR)-(VV)-PT100-Exi
---------	----------	----	-------	------	------	----	-----	---------------------------

Basic Configuration

UNS-1000 Series Level switches type

Check Required Specs

Material of Stem

- VA 316 SS
- MS Brass

Mounting Element

- T1/8NPT 1/8" NPT, integral thread
- T1/2NPT 1/2" NPT, integral thread, only with PG7
- T1NPT 1" NPT tank screw
- FLA3 Blind flange, 2" 150 lbs RF (ANSI)

Electrical Connection

- ST1 Cube plug DIN 43650, 3-pin + earth
- KL6C Aluminum terminal box, 6 terminals w/ 1/2" NPT conduit
- KL12C Aluminum terminal box, 9 terminals w/ 1/2" NPT conduit
- PG7 PG7-cable gland with 1 m PVC-cable (22 AWG)
- K PCV-cable sealed std 1 meter (22 AWG)
- KXPC Explosion proof junction box with 1/2" conduit

No. of Switchpoints***

- L1 1 Switchpoint @ _____ in/mm
- L2 2 Switchpoints @ _____ in/mm
- L3 3 Switchpoints @ _____ in/mm
- L4 4 Switchpoints @ _____ in/mm
- L5 5 Switchpoints @ _____ in/mm

Float Type

	Min. Density	Material	Form	Dia (Ø)	Max. Temp.	Pressure (+20 °C)
<input type="checkbox"/> BN25	0.57 g/cm ³	NBR	Cylinder	1" 25 mm	212 °F (100 °C)	15 bar
<input type="checkbox"/> VA27	0.71 g/cm ³	Stainless steel, 316	Cylinder	1-1/16" 27 mm	302 °F (150 °C)	15 bar
<input type="checkbox"/> VA44	0.67 g/cm ³	Stainless steel, 316SS	Ball	1-3/4" 44 mm	302 °F (150 °C)	15 bar

Options, please specify when needed

- DR Damping tube
- HT High temperature silicone-cable (-40 °F to +302 °F (-40 °C to +150 °C))
- U Mounting through bottom
- PT100 PT100-element
- VV Vertical adjustment
- Exi ATEX approval EEx ia

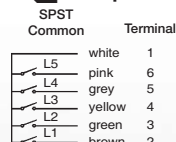
Contact Type of Float(s)

Contact Mode	Contact Rating
<input type="checkbox"/> 1-SPST (NO)	230 V AC / DC, 2 A, 40 VA / W
<input type="checkbox"/> 2-SPST (NC)	230 V AC / DC, 2 A, 40 VA / W
<input type="checkbox"/> 3-SPDT	150 V AC / 100 V DC, 0.2 A, 3 VA / W

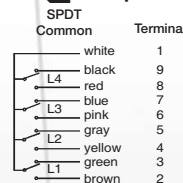
Must specify with your orders

- 1 - Overall stem length: L0= _____ in/mm max. 40" (1000 mm)
- 2 - Dimensional position of float***
- 3 - Pick wiring code:

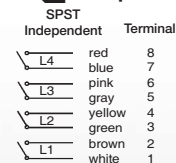
Group 1



Group 2



Group 3



Group 4

