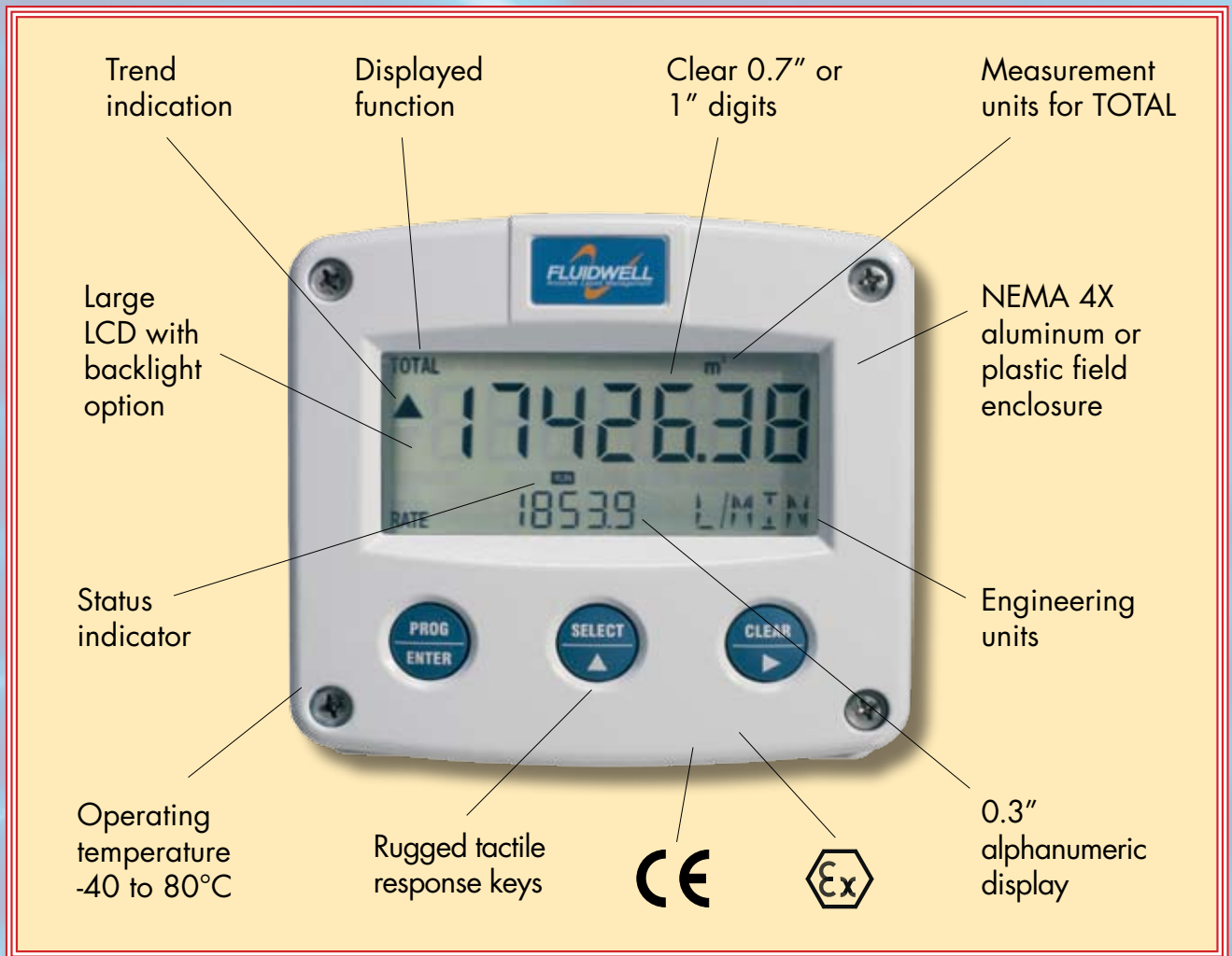




Fluidwell F-Series

Flow • Level • Pressure • Temperature



- 4-20 mA, 0-10 V, pulse, or RTD inputs
- Intrinsically safe or explosion-proof
- AC, DC, loop, or battery power
- Operates from -40 to 80°C
- Rugged NEMA 4X enclosures
- Serial Modbus communications
- Field & panel mount enclosures
- Backlighting

Try the all new Fluidwell Configurator at: www.predig.com/configurator



www.predig.com

Exclusive North & South American Agent For Fluidwell Products

PRECISION DIGITAL CORPORATION

19 Strathmore Rd • Natick MA 01760 USA • Tel: (800) 343-1001 • Fax: (508) 655-8990

Fluidwell F-Series Product Offerings

for more details see the individual Quick Select Guides beginning on the next page

Rate/Totalizers



- Analog or pulse input
- Multi-point linearization
- 7 digit flow rate display
- 7 digit total display
- 11 digit non-resettable total
- Bi-directional measurement
- High & low alarms
- Analog & pulse outputs

Batch Controllers



- Analog or pulse input
- 1 or 2 stage batch control
- Start, stop, & pause buttons
- Overrun correction
- Count up or count down
- Flow rate, preset value, & total display
- 11 digit non-resettable total

Flow Computers



- Analog or pulse input
- Temperature compensation for liquids
- Temperature & pressure compensation for gas
- Ratio calculation & monitoring
- Fuel consumption calculation
- 11 digit non-resettable total

Level, Pressure, & Temperature Indicators



Battery-powered RTD temperature meter

- Analog or RTD input
- Multi-point linearization
- Displays volume, height & %
- Dual pressure inputs
- High & low alarms
- Analog output

Fluidwell F-Series Quick Select Guide

Flow Rate/Totalizers



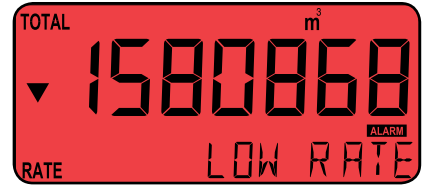
F011 with backlight on



F012, F014, F110, F115, F016, F112



F111 with backlight off



F013 & F113 in alarm condition

Flow Rate/Totalizers	Linearization							High/low alarms				
	F010	F011	F012	F014	F110	F111	F115	F016	F112	F118	F013	F113
	Flow rate indicator	Flow totalizer	Flow rate/totalizer	with pulse output	with pulse & analog outputs	with two inputs & two pulse outputs	with bi-directional measurement	with pulse output	with pulse & analog outputs	with pulse & analog output & two flow rate alarms	Flow rate monitoring with one alarm output	Flow rate monitoring max four alarm outputs
Pulse, NAMUR, coil input	✓	✓	✓	✓	✓	✓	✓	✓	✓	✓	✓	✓
0-20 mA, 4-20 mA input	✓	✓	✓	✓	✓	✓		✓	✓	✓	✓	✓
0-10 V input	✓	✓	✓	✓	✓	✓		✓	✓	✓	✓	✓
Actual flow rate	✓		✓	✓	✓	✓	✓	✓	✓	✓	✓	✓
Actual total (resettable)		✓	✓	✓	✓	✓	✓	✓	✓	✓	✓	✓
Accumulated total (non-resettable)		✓	✓	✓	✓	✓	✓	✓	✓	✓	✓	✓
Multi-point linearization								✓	✓	✓		
Analog output (flow rate)					✓		✓		✓	✓		✓
Pulse output assigned to total				✓	✓	✓	✓	✓	✓	✓		✓
High & low alarms										✓	✓	✓
Flow direction detection							✓					
Dual input						✓	✓					
External reset total					✓				✓			✓
RS-232, RS-485, TTL					✓	✓	✓		✓	✓		✓
Intrinsically safe or exp-proof	✓	✓	✓	✓	✓	✓	✓	✓	✓	✓	✓	✓
Backlight	✓	✓	✓	✓	✓	✓	✓	✓	✓	✓	✓	✓

Try the new Fluidwell Configurator at: www.predig.com/configurator

ACCURACY ■ RELIABILITY ■ CONVENIENCE ■ PRECISION DIGITAL

See Data Sheets at www.predig.com for Complete Details



www.predig.com

Fluidwell F-Series Quick Select Guide

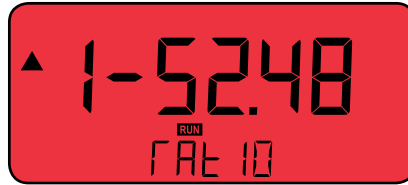
Flow Computers



F126-EL with backlight off



F126-EG with backlight on



F114 with ratio in alarm condition



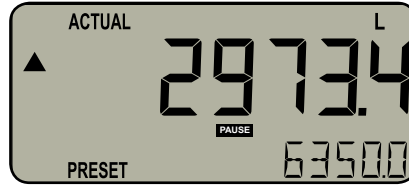
F116 & F127-EL with sum/differential

Flow Computers	Ratio		Differential/sum		
	F126-EL	F126-EG	F114	F116	F127-EL
	Flow & temperature for liquid volume calc.	Flow, temp, & press. for gas volume calc.	Ratio calculation & monitoring	Consumption/sum calculation	Consumption calc. with temp correction
Pulse, NAMUR, coil input	✓	✓	✓	✓	✓
0-20 mA, 4-20 mA input	✓	✓	✓	✓	
0-10 V input	✓	✓	✓	✓	
Actual flow rate	✓	✓	✓	✓	✓
Actual total (resettable)	✓	✓	✓	✓	✓
Accumulated total (non-resettable)	✓	✓		✓	✓
Actual temperature	✓	✓			✓
Actual pressure		✓			
Analog output (flow rate)	✓	✓	✓	✓	✓
Pulse output assigned to total				✓	
High & low alarms			✓		
Temperature compensation	✓	✓			✓
Pressure compensation		✓			
Dual input			✓	✓	✓
Fuel consumption calculation				✓	✓
Sum calculation (add on)				✓	
Ratio calculation			✓		
RS-232, RS-485, TTL	✓	✓	✓	✓	✓
Intrinsically safe or explosion-proof	✓	✓	✓	✓	✓
Backlight	✓	✓	✓	✓	✓

Try the new Fluidwell Configurator at: www.predig.com/configurator

Fluidwell F-Series Quick Select Guide

Batch Controllers



F030, F130 & F136 with batch paused & backlight off



F131 & F133 with backlight on

Batch Controllers/Dispensers	F030	F130	F131	F133	F136
	with one stage control output	with two stage control or pulse outputs	with two control/pulse & analog output	Delivery controller with batch counter	with two control/pulse & analog output
Pulse, NAMUR, coil input	✓	✓	✓	✓	✓
0-20 mA, 4-20 mA input	✓	✓	✓		✓
0-10 V input	✓	✓	✓		✓
Actual flow rate			✓	✓	✓
Actual total (resettable)	✓	✓	✓	✓	✓
Accumulated total (non-resettable)	✓	✓	✓	✓	✓
Batch counter				✓	
Preset and actual value	✓	✓	✓		✓
Analog output assigned to rate			✓		
Analog output assigned to batch process					✓
Pulse output assigned to total		✓	✓		✓
1 stage control output	✓	✓	✓	✓	✓
2 stage control output		✓	✓		✓
Ticket printing				✓	
Overrun correction	✓	✓	✓		✓
External start/stop		✓	✓	✓	✓
RS-232, RS-485, TTL		✓	✓	✓	✓
Intrinsically safe or explosion-proof	✓	✓	✓	✓	✓
Backlight	✓	✓	✓	✓	✓

Try the new Fluidwell Configurator at: www.predig.com/configurator

ACCURACY ■ RELIABILITY ■ CONVENIENCE ■ PRECISION DIGITAL

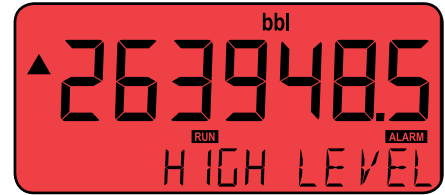
See Data Sheets at www.predig.com for Complete Details

PRECISION DIGITAL

www.predig.com

Fluidwell F-Series Quick Select Guide

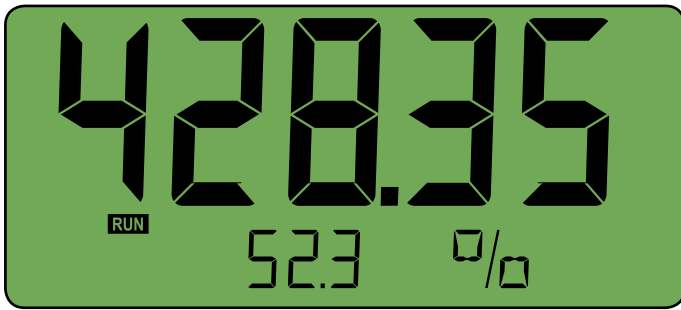
Level Indicators



F073 in alarm condition



F170 with high/low alarms & backlight on



F070 with 1" high display & backlight on



F173 with linearization & backlight off

Level Indicators	High/low alarms			Linearization	
	F070	F073	F170	F077	F173
	Level indicator	with one alarm output	with analog & max four alarm outputs	with one alarm output	with analog & max four alarm outputs
0-20 mA, 4-20 mA input	✓	✓	✓	✓	✓
0-10 V input	✓	✓	✓	✓	✓
Displays volume, height, and percentage	✓	✓	✓	✓	✓
Multi-point linearization				✓	✓
Analog output			✓		✓
High & low alarms		✓	✓	✓	✓
RS-232, RS-485, TTL			✓		✓
Intrinsically safe or explosion-proof	✓	✓	✓	✓	✓
Backlight	✓	✓	✓	✓	✓

Try the new Fluidwell Configurator at: www.predig.com/configurator



FLOW ■ LEVEL ■ PRESSURE ■ TEMPERATURE ■ PRECISION DIGITAL

See Data Sheets at www.predig.com for Complete Details

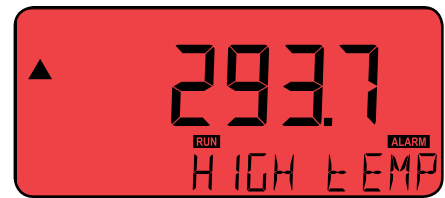
Fluidwell F-Series Quick Select Guide

Pressure Indicators

Pressure Indicators	High/low alarms			
	F050	F151	F053	F153
	Pressure indicator	Dual pressure indicator	with one alarm output	with analog & max four alarm outputs
0-20 mA, 4-20 mA input	✓	✓	✓	✓
0-10 V input	✓	✓	✓	✓
Actual pressure & engineering units	✓	✓	✓	✓
Analog output				✓
High & low alarms			✓	✓
Dual input		✓		
RS-232, RS-485, TTL		✓		✓
Intrinsically safe or explosion-proof	✓	✓	✓	✓
Backlight	✓	✓	✓	✓



F151 with backlight on



F143 with high/low alarms in alarm condition

Temperature Indicators

Temperature Indicators	High/low alarms			
	F040	F141	F043	F143
	Temperature indicator	Dual temperature indicator	with one alarm output	with analog & max four alarm outputs
0-20 mA, 4-20 mA input	✓	✓	✓	✓
0-10 V input	✓	✓	✓	✓
100 Ω RTD (Pt100)	✓	✓	✓	✓
Actual temperature & engineering units	✓	✓	✓	✓
Analog output				✓
High & low alarms			✓	✓
Dual input		✓		
RS-232, RS-485, TTL		✓		✓
Intrinsically safe or explosion-proof	✓	✓	✓	✓
Backlight	✓	✓	✓	✓

Try the new Fluidwell Configurator at: www.predig.com/configurator

ACCURACY ■ RELIABILITY ■ CONVENIENCE ■ PRECISION DIGITAL

See Data Sheets at www.predig.com for Complete Details

**PRECISION
DIGITAL**

www.predig.com

**PRECISION
DIGITAL**

**Exclusive North & South American
Agent for Fluidwell Products**



Flow • Level • Pressure • Temperature



- **Flow Rate Indicators**
- **Flow Totalizers**
- **Flow Computers**
- **Batch Controllers**
- **Transmitters**
- **Fuel Consumption Computers**
- **Setpoint Generators**
- **Modbus Display**
- **Loop-Powered Displays**
- **Level Indicators**

Try the New Online Fluidwell Configurator! Go to www.predig.com/configurator