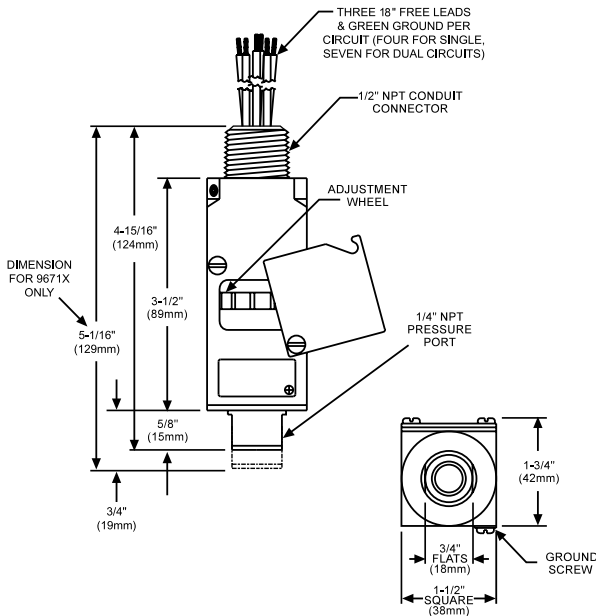


Series 9671X/9681X



Features

- NEMA 4 X, 7 & 9
- Safe to Adjust During Operation
- Tamper Resistant Cover
- Dia-Seal Piston Sensor
- DPDT Switch Option*



Wiring Code	Pressure		Vacuum	
	Circuit 1	Circuit 2	Circuit 1	Circuit 2
Normally Open	Red	Yellow	Blue	Orange
Common	Purple	Brown	Purple	Brown
Normally Closed	Blue	Orange	Red	Yellow
Ground	Green		Green	

Pressure Switches - Pressure Ratings: psig and (MPa)

Range	Pressure Setting Range				Approx. Actuation Differential	Proof Pressure	Catalog No. SPDT	Catalog No. DPDT
	Decreasing		Increasing					
	Min	Max	Min	Max				
15 (.10)	2 (.01)	12 (.08)	3 (.02)	15 (.10)	1 - 3 (.01-.02)	1000 (6.90)	9681X-1CC-1	9681X-2CC-1
150 (1.03)	5 (.03)	125 (.86)	7 (.05)	150 (1.03)	2 - 25 (.01-.17)	1000 (6.90)	9681X-1CC-2	9681X-2CC-2
300 (2.07)	25 (.17)	250 (1.72)	32 (.22)	300 (2.07)	7 - 40 (.05-.28)	1000 (6.90)	9681X-1CC-3	9681X-2CC-3
500 (3.45)	50 (.34)	440 (3.03)	65 (.45)	500 (3.45)	15-60 (.10-.41)	1000 (6.90)	9681X-1CC-4	9681X-2CC-4
Vacuum Switches - Vacuum Ratings: in.Hg								
30	1	21	5	30	4-9	30 psi	9671X-1CC	9671X-2CC

Performance Characteristics

Accuracy ± 2% of Full Scale
Typical Life 2.5 Million Cycles
Switch Type SPDT, Snap Action, Class CC
Rating 11 amp @ 125/250 VAC
 5 amp @ 30 VDC
 1 amp @ 125 VDC
Adjustment Internal Adjustment Wheel

Physical

Weight 1.85 lbs.

Wetted Parts

Process Fitting 300 Series Stainless Steel
 Seals Viton® Diaphragm
 Piston 300 Series Stainless Steel

Enclosure

Ratings NEMA 4 X, 7 & 9.

Pressure Connection

Electrical Connection

1/4" NPT Female
 1/2" NPT Male Conduit Connection, 18 AWG 18" (300 mm) Freeleads, PVC Jacket

Approvals

UL #E37043, CSA #LR22354 and CENELEC Hazardous Locations, Division I Class I, Group A, B, C & D Class II, Group E, F & G

Environmental

Ambient Temperature -20 to 165°F (-29 to 74°C)
EMI/RFI to EN 55011
Vibration 10 g's 10-500 Hz, MIL-STD 202F
Shock 50 g's, 11 mS, MIL-S-901C

Standard Options

*2 - Dual Circuit, 2 SPDT switches to simulate DPDT operation. (Replace "1" with "2" in catalog number. Example: 9681X-2CC-1)
 GH - Gold Contact Limit Switch, 1 amp @ 125 VAC (Replace "CC" with "GH" in catalog number. Example: 9681X-1GH-1)

Options below:

Add dash & suffix letter to catalog number (Example: 9681X-1CC-1-E-P1).

BR - 1/4" NPT female brass fitting

B - Buna N

E - Ethylene Propylene

N - Neoprene

P1 - 7/16-20 SAE female process connection

P3 - 1/2" NPT female process connection (9681X only)

P4 - 1/2" NPT male process connection