



- Two-wire operation (24 VDC)
- Senses practically any liquid
- Electronic options
- Rigid or flexible probes
- FM approved for hazardous areas

Cap-Level® IIA is an excellent choice for level monitoring and control. The “industry standard” 4-20mA output is provided with a selectable dampening function to stabilize readings where severe agitation is present. Simple zero and span adjustment make calibration easy.

The relay logic circuitry offers the flexibility to control multiple pumps, conveyors, and alarms. Each relay can be set to turn your equipment on and off at any selected point on the probe - without any external latching devices. Failsafe selection gives the security of fault indication and/or conveyor stop if power is lost.

The probe configurations and materials offered allow you to custom fit Cap-Level® IIA to your application. Designs, such as the type “E” and “H” tie-down, allow use in tall silos and include a unique cable tightening adjustment.

Features and Benefits

Continuous 4-20mA
Industry standout output

Output Dampening - Standard
Stabilizes readings where severe agitation is present

Teflon, PVC, and 316 S.S. Probes and NPT or Flange Mounting
Provides more options for a wide range of applications

Continuous Process Management
Uninterrupted level measurement

How to Order

CL - 2A - - 4 - - - - - 10

Design Level
(Assigned by Factory)

Modification (See Note 3)
A = No Lagging Extension
B = With 10” Stainless Lagging Extension

Flange Material
1 = None
2 = 316 S.S.
3 = Carbon Steel
4 = Teflon® Faced 316 S.S. (See Note 2)
5 = Teflon® Faced Carbon Steel (See Note 2)

Flange Option (See Note 2)
A = None
B = 1½” 150 lb
C = 2” 150 lb
D = 3” 150 lb
E = 4” 150 lb
S = Special (Consult Factory)

Probe Length (Specify in Inches) (See Note 5 & 6)

Probe Type
A = 316 S.S. Solid Probe (See Note 7)
B = Teflon® Jacketed Solid Probe
D = Bare S.S. Cable, S.S. Weight (See Note 7)
E = Bare S.S. Cable, Tie Down Assy. (See Note 7)
H = Teflon® Jacketed Cable, Tie Down Assy.
I = Teflon® Jacketed Cable, Teflon Jacketed Weight
M = PVC Jacketed Solid Probe
N = Teflon® Jacketed Solid With 1” Sanitary Mount
P = 316 S.S. Solid with 1” Sanitary Mount (See Note 7)
Q = Teflon® Jacketed Solid Probe With 2” Sanitary Mount

Voltage
4 = 24 VDC (External Loop Power Supply Required)

Enclosure
G = General Purpose - NEMA 4X; Integral, FM Approved
R = NEMA 4X, Remote (See Note 4)

Series IIA
2A = 2 Wire Analog (4-20mA) (See Note 1)

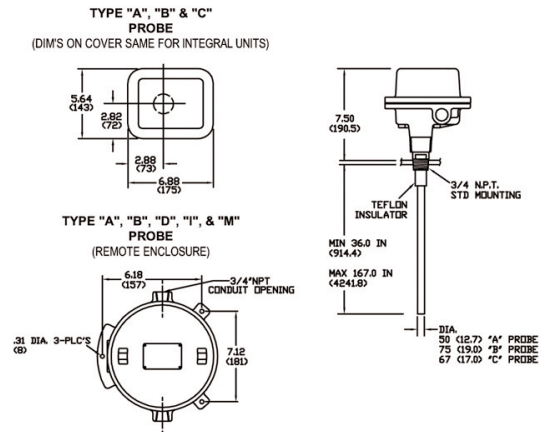
Cap-Level

- Note 1:** All models intrinsically safe when used with approved barriers.
- Note 2:** For welded flange, specify on order.
- Note 3:** Lagging assembly used for hi-temperature applications.
- Note 4:** Order remote cable as part number SCL 210328 specify length, (20 ft./6.1m maximum). Jacketed probes are required for conductive media.
- Note 5:** Maximum standard length for solid probes is 167” (4242mm). For probes exceeding this length contact factory.
- Note 6:** Maximum standard length for cable probes is 1200” (30480mm). For probes exceeding this length contact factory.
- Note 7:** For dry or non-conductive materials only.

Electrical Specifications

Power:	15-32 VDC (27 VDC max. for L.S. operation)
Output:	4-20mA
Drive Capability:	450 ohms @ 24 VDC (varies with voltage)
Calibration:	Zero and span with frequency selection
Capacitance Range:	0 pF to 4000 pF nominal
Repeatability:	±1% of span (constant dielectric)
Sensing System:	High frequency capacitance with digital comparator
Approvals:	CSA listed for explosion-proof Class I, Groups C & D; FM listed for intrinsically safe Class I, II, III, Division I, Groups C, D, E, F & G outdoor

Dimensions



Mechanical Specifications

Enclosure(s):	NEMA 4X, aluminum with corrosion resistant polyester coating
Enclosure Operation Temperature:	-40° F to 120° F (-40° C to 49° C) (lagging assembly for higher temperature)

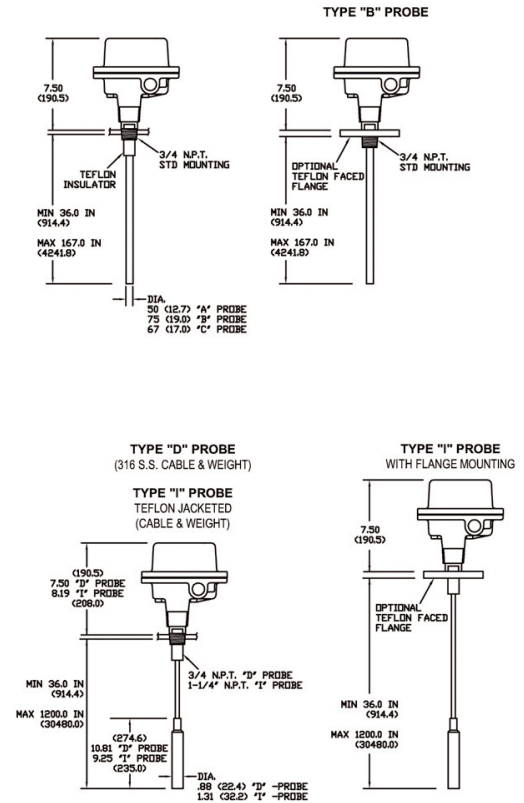
Probe Specifications

Length:	As specified - types A, B, M, N, P, Q, 167" (4175mm) maximum; Types D, E, H, I, 1200" (36000mm) maximum
---------	---

Probe Application

Probe types A, D, E - non-conductive media only. Use auxiliary ground rod or stilling well (reference ground) in fiberglass or lined vessels.

Probe Type	Mount Standard	Material	Pressure (Maximum)	Temperature (Maximum)
A	3/4" NPT	316 S.S.	50 PSI (3.51 kg/cm ²)	250° F (121° C)
B	3/4" NPT	Teflon®/S.S.	50 PSI (3.51 kg/cm ²)	250° F (121° C)
D	1 1/4" NPT	316 S.S.	Atmospheric	250° F (121° C)
E	1 1/4" NPT	316 S.S.	Atmospheric	250° F (121° C)
H	1 1/4" NPT	Teflon®/S.S.	Atmospheric	250° F (121° C)
I	1 1/4" NPT	Teflon®/S.S.	50 PSI (3.51 kg/cm ²)	250° F (121° C)
M	3/4" NPT	PVC/S.S.	50 PSI (3.51 kg/cm ²)	140° F (60° C)
N	1" Sanitary	Teflon®/S.S.	50 PSI (3.51 kg/cm ²)	250° F (121° C)
P	1" Sanitary	316 S.S.	50 PSI (3.51 kg/cm ²)	250° F (121° C)
Q	2" Sanitary	Teflon®/S.S.	50 PSI (3.51 kg/cm ²)	250° F (121° C)



150 Venture Boulevard · Spartanburg, SC 29306
 Tel: (800) 778-9242 · (864) 574-8060
 Fax: (864) 574-8063 E-mail: sales@bindicator.com
 www.bindicator.com

Teflon® is a registered trademark of E.I. Du Pont
 2006 All rights reserved.
 All data subject to change without notice.

