



REOTEMP Gas Actuated Thermometers combine advanced gas coil technology with a state-of-the-art adsorbent (Class IV) thermal system, producing superior temperature measurement instrument that can be fitted to a wide variety applications

Features include high accuracy, low ambient error, no head error, and a high degree of over-range protection. The compact (3/8" dia. x 3" active length) bulb, and a wide range of case styles and thermal systems, allow great flexibility in installation.

The linear dial on all REOTEMP gas thermometers provides a consistent 1% accuracy across the full span of each range. This, combined with over twenty Fahrenheit and dual ranges, from -320 F to +1200 F, provides complete coverage of all normal temperature requirements.



Specifications

Accuracy: +/- 1 % of full scale. Calibration to NIST traceable standards.

Ranges: Twenty °F and °F & °C ranges available from -320°F to 1200°F.

Overrange: Minimum 50% of span above top of range, or 1300°F, whichever is less.

Ambient Error: 1/4% of span per 25°F change in ambient temperature at midscale.

Dial Sizes: 4 1/2" & 6". Dials are white with black markings.

Case Materials: Stainless steel, Phenolic, or Aluminum.

Case Styles: Panel Mount, Surface Mount, or Direct (stem) Mount.

Windows: Glass is standard. Shatterproof glass and acrylic are optional.

Pointers: Slotted adjustable type to permit zero-set adjustments.

Bulbs: 316 Stainless Steel, 3/8" dia. x 3" active length. Other diameters and lengths are available.

Process Connections: Plain bulb; 1/2" NPT sliding union; 1/2" NPT fixed (on All-Angle); or thermowell. *Note: Thermowells should be used whenever the bulb would be exposed to pressure, fluid velocity, or corrosive or abrasive media.*

Thermal Systems: Stainless steel capillary with stainless steel spring armor (up to 40ft). Over 40 feet, stainless steel interlock armor is standard. Direct mount stems, 316 SS, 4" to 48".



Filled System Thermometers

Gas Actuated - How to Order

Table 1
Case Size & Style

G

G 4 5 E R

Table 2
Thermal System & Bulb

8 7

Table 3
Capillary Length (feet)

L

L 1 5

Table 4
Temperature

F B

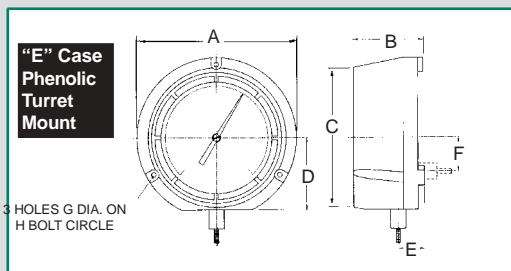
Table 5
Options

X

X A W

Table 1-Case Style

Wall Mount ("E" or "K" case)

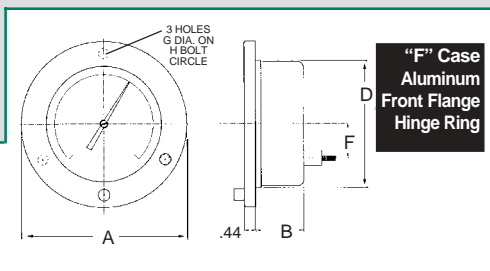


CASE CODE	CASE DIAMETER	CONNECTION
-----------	---------------	------------

G45ER	4 1/2"	REAR
G45EL	4 1/2"	LOWER

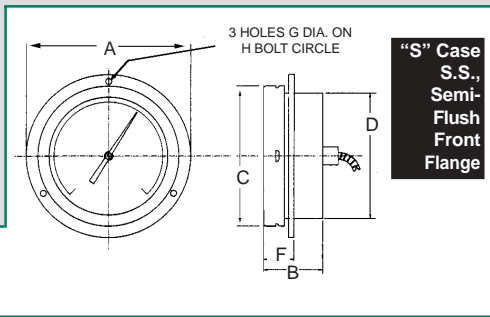
G45FR	4 1/2"	REAR
G60FR	6"	REAR

Panel Mount ("F", "S" or "U" case)

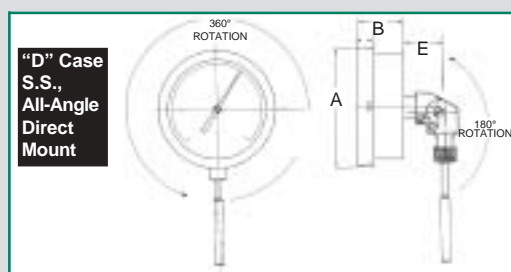


G45KR	4 1/2"	REAR
G45KL	4 1/2"	LOWER
G60KR	6"	REAR
G60KL	6"	LOWER

G45SR	4 1/2"	REAR
G60SR	6"	REAR

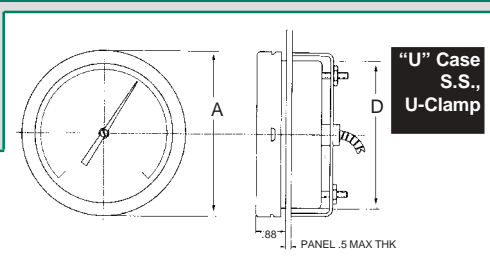


Direct Mount ("D" case)



G45DA	4 1/2"	ADJUST
G60DA	6"	ADJUST

G45UR	4 1/2"	REAR
G60UR	6"	REAR



Case Dimensions

Case Size	Case	Type	A	B	C	D	E	F	G	H
4 1/2"	"E"	Turret Phenolic	5.83	2.56	5.08	2.62	1.0	.20	.24	5.39
4 1/2"	"F"	Front Flange	6.31	1.63	-	4.88	-	1.35	.19	5.38
4 1/2"	"K"	Back Flange	5.88	2.15	5.04	-	-	-	0.22	5.38
4 1/2"	"S"	Semi-Flush	5.88	2.15	5.04	4.51	-	1.00	0.22	5.38
4 1/2"	"D"	All Angle	5.04	2.00	-	-	1.70	-	-	-
4 1/2"	"U"	U-Clamp	5.04	-	-	4.51	-	-	-	-
6"	"F"	Front Flange	7.87	1.59	-	6.34	-	1.75	0.19	6.69
6"	"K"	Back Flange	7.50	2.15	6.38	-	-	-	0.25	6.84
6"	"S"	Semi-Flush	7.50	2.15	6.38	5.88	-	1.00	0.25	6.84
6"	"D"	All Angle	6.38	2.15	-	-	1.70	-	-	-
6"	"U"	U-Clamp	6.38	-	-	5.88	-	-	-	-

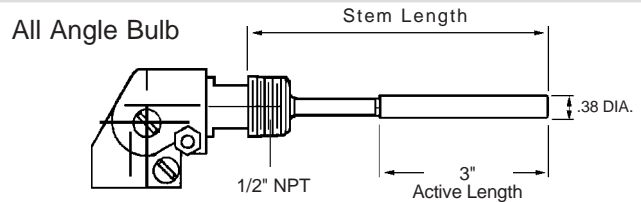
REOTEMP INSTRUMENT CORPORATION

Telephone: (800) 648-7737 FAX (858) 784-0720 • sales@reotemp.com • www.reotemp.com

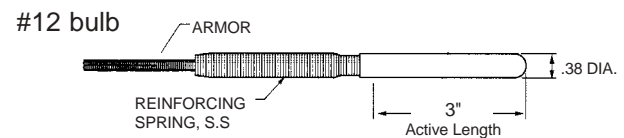
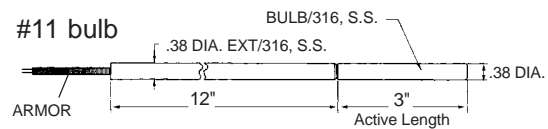


Table 2-Thermal Systems (all bulbs & capillaries are 316 SS)

CODE	DESCRIPTION
All Angle Direct Mount with 1/2" NPT (with "D" case only)	
04	4" stem x 3/8" diameter
06	6" stem x 3/8" diameter
09	9" stem x 3/8" diameter
0X	12" or longer stem x 3/8" dia. - specify stem length EXAMPLE: G45DA - 0X - 12" FB



Plain Bulbs	
11	Plain bulb, 3/8" x 3" active, + 12" rigid extension
12	Plain bulb, 3/8" x 3" active



Sliding 1/2" NPT on Bendable Extension	
87	3/8" x 3" active, 12" bendable extension
88	3/8" x 3" active, 18" bendable extension
8X	3/8" x 3" active, over 18" bendable (Specify)

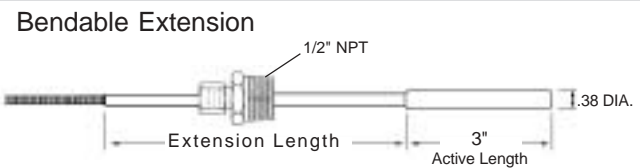


Table 3-Capillary Length

Specify Armored Capillary Length in Feet, up to 99 ft. (omit for "D" case).

L05 = 5 feet **L10** = 10 feet **L15** = 15 feet...etc.

Note: Stainless steel spring armor is standard protection on all capillary. Capillary over 40 feet requires XSI Spiral Interlock Armor option.

Table 4-Temperature Ranges

CODE	°F RANGES	DIV.
FB	-320/100°F	5°
FE	-120/120°F	2°
FG	-40/180°F	2°
FH	0/120°F	1°
FJ	60/120°F	1°
FL	20/240°F	2°
FN	0/300°F	5°
FP	50/550°F	5°
FR	50/750°F	5°
FT	400/1200°F	10°

CODE	°F & °C RANGES	DIV.
DB	-320/100°F / -200/40°C	5°/2°
DE	-120/120°F / -85/50°C	2°/1°
DG	-40/180°F / -40/80°C	2°/2°
DH	0/120°F / -15/50°C	1°/1°
DJ	60/120°F / 15/5°C	1°/1/2°
DL	20/240°F / -5/110°C	2°/1°
DN	0/300°F / -10/150°C	5°/1°
DP	50/550°F / 10/290°C	5°/5°
DR	50/750°F / 0/400°C	5°/5°
DT	400/1200°F / -200/650°C	10°/5°

Note: °C Ranges available on request



Filled System Thermometers

Gas Actuated

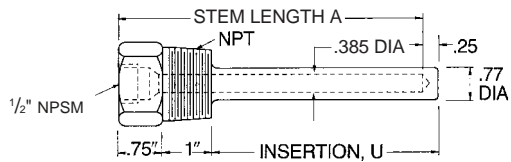
Table 5 - Accessories & Options

Code	Description
XAW	Acrylic Window (4 1/2" Cases only; not available in "F" Case).
XSG	Safety Glass Window (4 1/2" Cases only; not available in "F" Case).
XMH	Maximum or Minimum Hand.
XMM	Maximum and Minimum Dual Hands.
XFR	Flush Mounting Ring for "E" Case.
XBF	1/2" NPT Fitting for #11 Bulb - Fits on Bulb or extension.
XCF	1/2" NPT Fitting - Fastens on spiral interlock armor (requires XSI option).
XSI	Spiral Interlock Armor (required over 40 feet).
XVD	Vibration Dampening feature (dampens vibration - available in all rear connected models).
XTW	Thermowell (see thermowell table below for order codes).

Thermowells for 3/8" dia. Elements

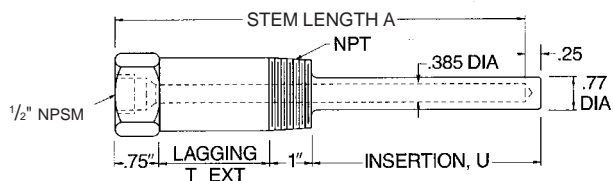
Standard Wells

External Thread P	Stem length A"	Insert Length U"	Order Code	
			304 s.s.	316 s.s.
3/4" NPT	4	2 1/2	046	146
	6	4 1/2	047	147
	9	7 1/2	048	148
	12	10 1/2	049	149
	15	13 1/2	050	150
	18	16 1/2	051	151
1" NPT	24	22 1/2	052	152
	4	2 1/2	053	153
	6	4 1/2	054	154
	9	7 1/2	055	155
	12	10 1/2	056	156
	15	13 1/2	057	157
18	16 1/2	058	158	
24	22 1/2	059	159	



Lagging Wells

External Thread P	Stem length A"	Insert Length U"	Lag Ext. T"	Order Code	
				304 s.s.	316 s.s.
3/4" NPT	6	2 1/2	2	247	347
	9	4 1/2	3	248	348
	12	7 1/2	3	249	349
	15	10 1/2	3	250	350
	18	13 1/2	3	251	351
	24	16 1/2	3	252	352



How to Order

Specify "TW" Plus Order Code

Example: **TW-146**

REO TEMP INSTRUMENT CORPORATION

Telephone: (800) 648-7737 FAX (858) 784-0720 • sales@reotemp.com • www.reotemp.com