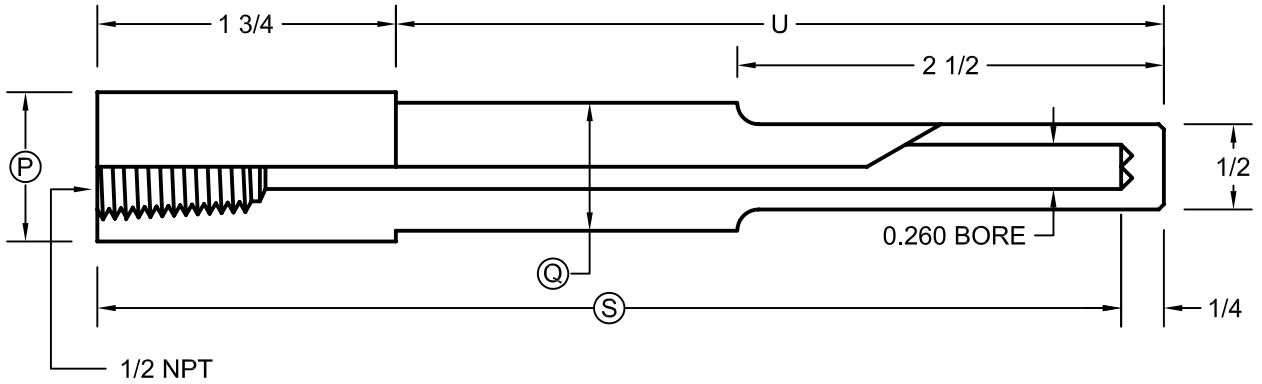


# SOCKET-WELD DESIGN THERMOWELLS

## FOR 1/4 AND 3/8 DIAMETER ELEMENTS

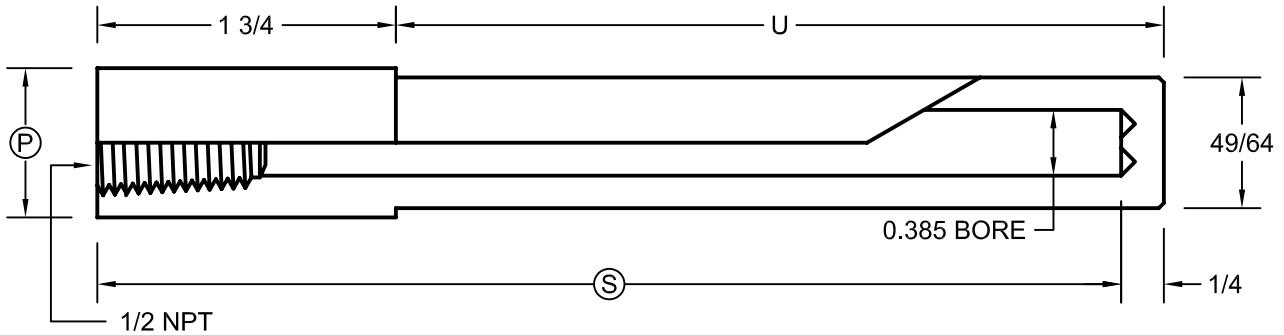
### 260W SOCKET-WELD



P	PART NO.	Q	P	S
3/4 NOMINAL (1.050 DIA)	3/4 260W-U2 1/2	3/4	1.050	4
	3/4 260W-U4 1/2	3/4	1.050	6
	3/4 260W-U7 1/2	3/4	1.050	9
	3/4 260W-U10 1/2	3/4	1.050	12
	3/4 260W-U13 1/2	3/4	1.050	15
	3/4 260W-U16 1/2	3/4	1.050	18
	3/4 260W-U22 1/2	3/4	1.050	24

P	PART NO.	Q	P	S
1 NOMINAL (1.315 DIA)	1 260W-U2 1/2	7/8	1.315	4
	1 260W-U4 1/2	7/8	1.315	6
	1 260W-U7 1/2	7/8	1.315	9
	1 260W-U10 1/2	7/8	1.315	12
	1 260W-U13 1/2	7/8	1.315	15
	1 260W-U16 1/2	7/8	1.315	18
	1 260W-U22 1/2	7/8	1.315	24

### 385W SOCKET-WELD



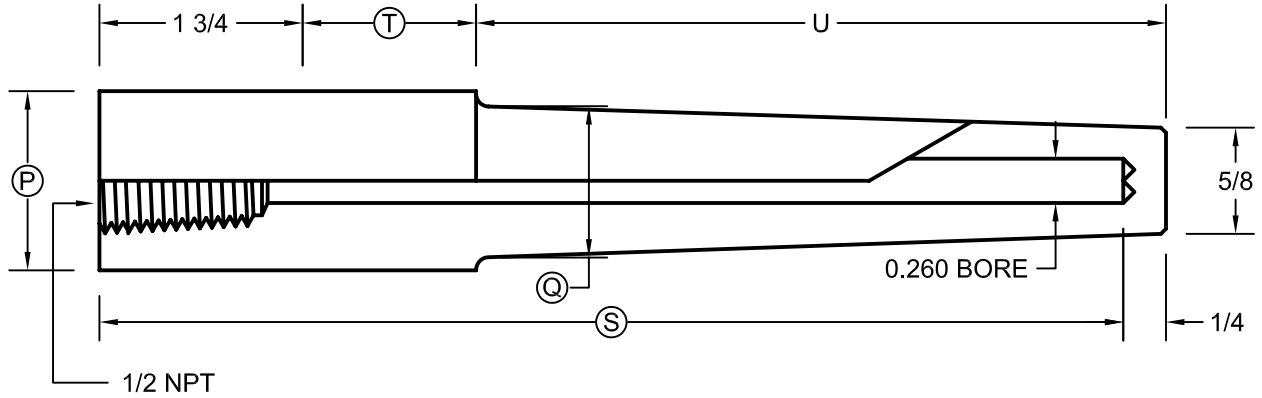
P	PART NO.	P	S
3/4 NOMINAL (1.050 DIA)	3/4 385W-U2 1/2	1.050	4
	3/4 385W-U4 1/2	1.050	6
	3/4 385W-U7 1/2	1.050	9
	3/4 385W-U10 1/2	1.050	12
	3/4 385W-U13 1/2	1.050	15
	3/4 385W-U16 1/2	1.050	18
	3/4 385W-U22 1/2	1.050	24

P	PART NO.	P	S
1 NOMINAL (1.315 DIA)	1 385W-U2 1/2	1.315	4
	1 385W-U4 1/2	1.315	6
	1 385W-U7 1/2	1.315	9
	1 385W-U10 1/2	1.315	12
	1 385W-U13 1/2	1.315	15
	1 385W-U16 1/2	1.315	18
	1 385W-U22 1/2	1.315	24

# SOCKET-WELD DESIGN THERMOWELLS

## FOR 1/4 AND 3/8 DIAMETER ELEMENTS

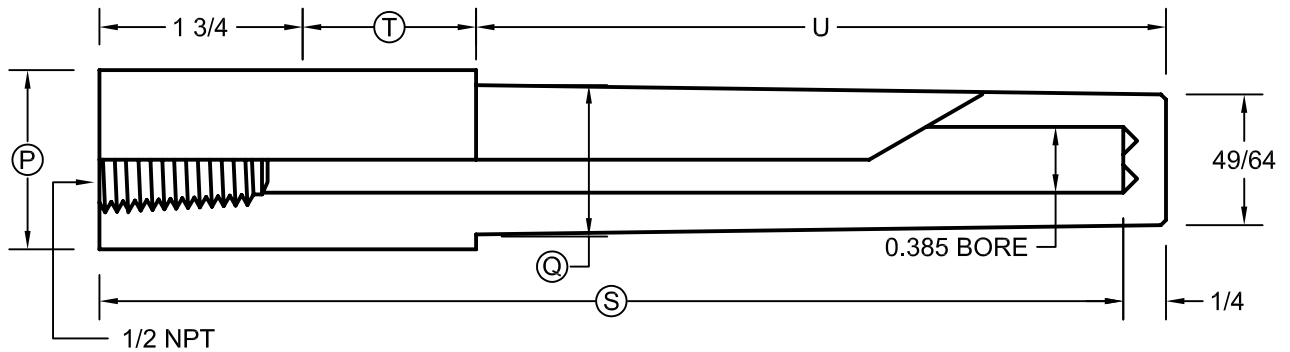
### 260WHL SOCKET-WELD



P	PART NO.	Q	T	S
PIPE SIZE	3/4 260WHL-U2 1/2	7/8	2	6
	3/4 260WHL-U4 1/2	7/8	3	9
3/4 NOMINAL (1.050 DIA)	3/4 260WHL-U7 1/2	7/8	3	12
	3/4 260WHL-U10 1/2	7/8	3	15
	3/4 260WHL-U13 1/2	7/8	3	18
	3/4 260WHL-U19 1/2	7/8	3	24

P	PART NO.	Q	T	S
PIPE SIZE	1 260WHL-U2 1/2	1-1/16	2	6
	1 260WHL-U4 1/2	1-1/16	3	9
1 NOMINAL (1.315 DIA)	1 260WHL-U7 1/2	1-1/16	3	12
	1 260WHL-U10 1/2	1-1/16	3	15
	1 260WHL-U13 1/2	1-1/16	3	18
	1 260WHL-U19 1/2	1-1/16	3	24

### 385WHL SOCKET-WELD



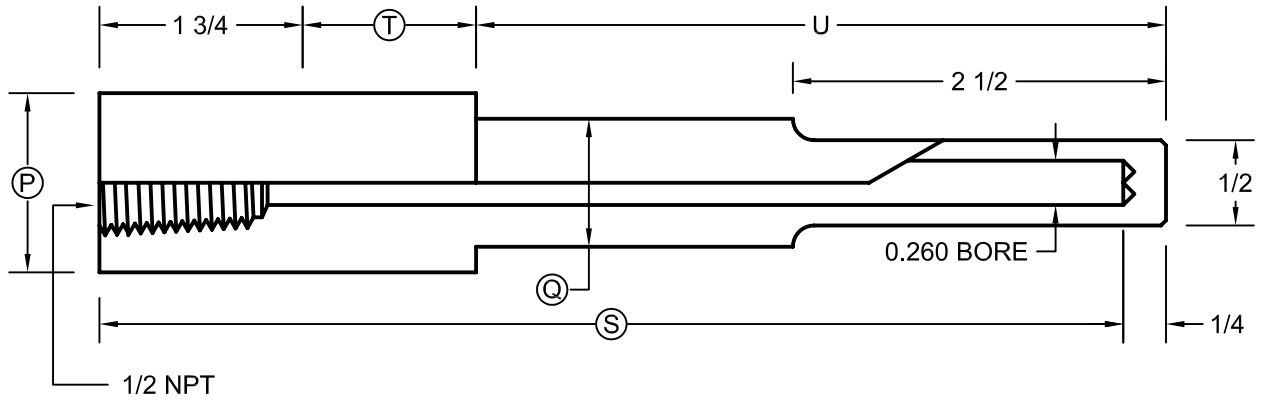
P	PART NO.	Q	T	S
PIPE SIZE	3/4 385WHL-U2 1/2	7/8	2	6
	3/4 385WHL-U4 1/2	7/8	3	9
3/4 NOMINAL (1.050 DIA)	3/4 385WHL-U7 1/2	7/8	3	12
	3/4 385WHL-U10 1/2	7/8	3	15
	3/4 385WHL-U13 1/2	7/8	3	18
	3/4 385WHL-U19 1/2	7/8	3	24

P	PART NO.	Q	T	S
PIPE SIZE	1 385WHL-U2 1/2	1-1/16	2	6
	1 385WHL-U4 1/2	1-1/16	3	9
1 NOMINAL (1.315 DIA)	1 385WHL-U7 1/2	1-1/16	3	12
	1 385WHL-U10 1/2	1-1/16	3	15
	1 385WHL-U13 1/2	1-1/16	3	18
	1 385WHL-U19 1/2	1-1/16	3	24

# SOCKET-WELD DESIGN THERMOWELLS

## FOR 1/4 AND 3/8 DIAMETER ELEMENTS

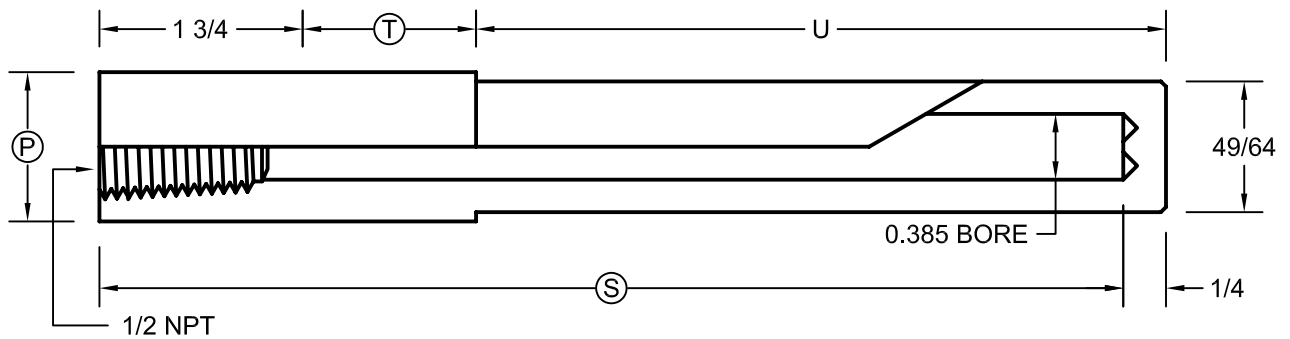
### 260WL SOCKET-WELD



P	PART NO.	Q	T	S
PIPE SIZE	3/4 260WL-U2 1/2	3/4	2	6
	3/4 260WL-U4 1/2	3/4	3	9
3/4 NOMINAL (1.050 DIA)	3/4 260WL-U7 1/2	3/4	3	12
	3/4 260WL-U10 1/2	3/4	3	15
	3/4 260WL-U13 1/2	3/4	3	18
	3/4 260WL-U19 1/2	3/4	3	24

P	PART NO.	Q	T	S
PIPE SIZE	1 260WL-U2 1/2	7/8	2	6
	1 260WL-U4 1/2	7/8	3	9
1 NOMINAL (1.315 DIA)	1 260WL-U7 1/2	7/8	3	12
	1 260WL-U10 1/2	7/8	3	15
	1 260WL-U13 1/2	7/8	3	18
	1 260WL-U19 1/2	7/8	3	24

### 385WL SOCKET-WELD



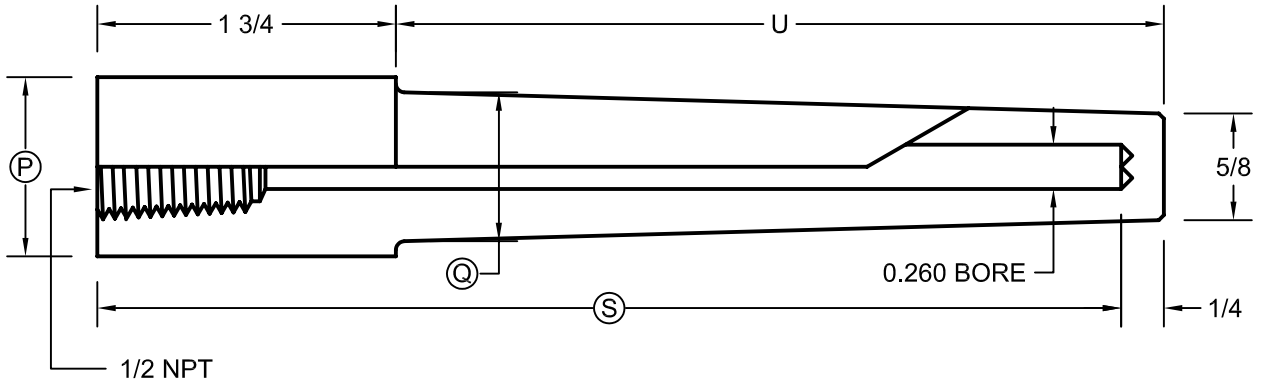
P	PART NO.	T	S
PIPE SIZE	3/4 385WL-U2 1/2	2	6
	3/4 385WL-U4 1/2	3	9
3/4 NOMINAL (1.050 DIA)	3/4 385WL-U7 1/2	3	12
	3/4 385WL-U10 1/2	3	15
	3/4 385WL-U13 1/2	3	18
	3/4 385WL-U19 1/2	3	24

P	PART NO.	T	S
PIPE SIZE	1 385WL-U2 1/2	2	6
	1 385WL-U4 1/2	3	9
1 NOMINAL (1.315 DIA)	1 385WL-U7 1/2	3	12
	1 385WL-U10 1/2	3	15
	1 385WL-U13 1/2	3	18
	1 385WL-U19 1/2	3	24

# SOCKET-WELD DESIGN THERMOWELLS

## FOR 1/4 AND 3/8 DIAMETER ELEMENTS

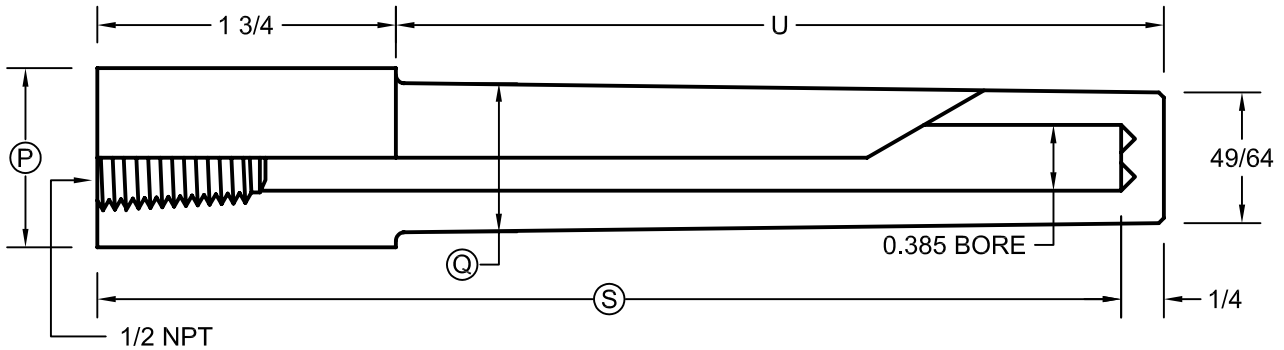
### 260WH SOCKET-WELD



P	PART NO.	Q	P	S
PIPE SIZE	3/4 260WH-U2 1/2	7/8	1.050	4
	3/4 260WH-U4 1/2	7/8	1.050	6
3/4 NOMINAL (1.050 DIA)	3/4 260WH-U7 1/2	7/8	1.050	9
	3/4 260WH-U10 1/2	7/8	1.050	12
	3/4 260WH-U13 1/2	7/8	1.050	15
	3/4 260WH-U16 1/2	7/8	1.050	18
	3/4 260WH-U22 1/2	7/8	1.050	24

P	PART NO.	Q	P	S
PIPE SIZE	1 260WH-U2 1/2	1-1/16	1.315	4
	1 260WH-U4 1/2	1-1/16	1.315	6
1 NOMINAL (1.315 DIA)	1 260WH-U7 1/2	1-1/16	1.315	9
	1 260WH-U10 1/2	1-1/16	1.315	12
	1 260WH-U13 1/2	1-1/16	1.315	15
	1 260WH-U16 1/2	1-1/16	1.315	18
	1 260WH-U22 1/2	1-1/16	1.315	24

### 385WH SOCKET-WELD



P	PART NO.	Q	P	S
PIPE SIZE	3/4 385WH-U2 1/2	7/8	1.050	4
	3/4 385WH-U4 1/2	7/8	1.050	6
3/4 NOMINAL (1.050 DIA)	3/4 385WH-U7 1/2	7/8	1.050	9
	3/4 385WH-U10 1/2	7/8	1.050	12
	3/4 385WH-U13 1/2	7/8	1.050	15
	3/4 385WH-U16 1/2	7/8	1.050	18
	3/4 385WH-U22 1/2	7/8	1.050	24

P	PART NO.	Q	P	S
PIPE SIZE	1 385WH-U2 1/2	1-1/16	1.315	4
	1 385WH-U4 1/2	1-1/16	1.315	6
1 NOMINAL (1.315 DIA)	1 385WH-U7 1/2	1-1/16	1.315	9
	1 385WH-U10 1/2	1-1/16	1.315	12
	1 385WH-U13 1/2	1-1/16	1.315	15
	1 385WH-U16 1/2	1-1/16	1.315	18
	1 385WH-U22 1/2	1-1/16	1.315	24